

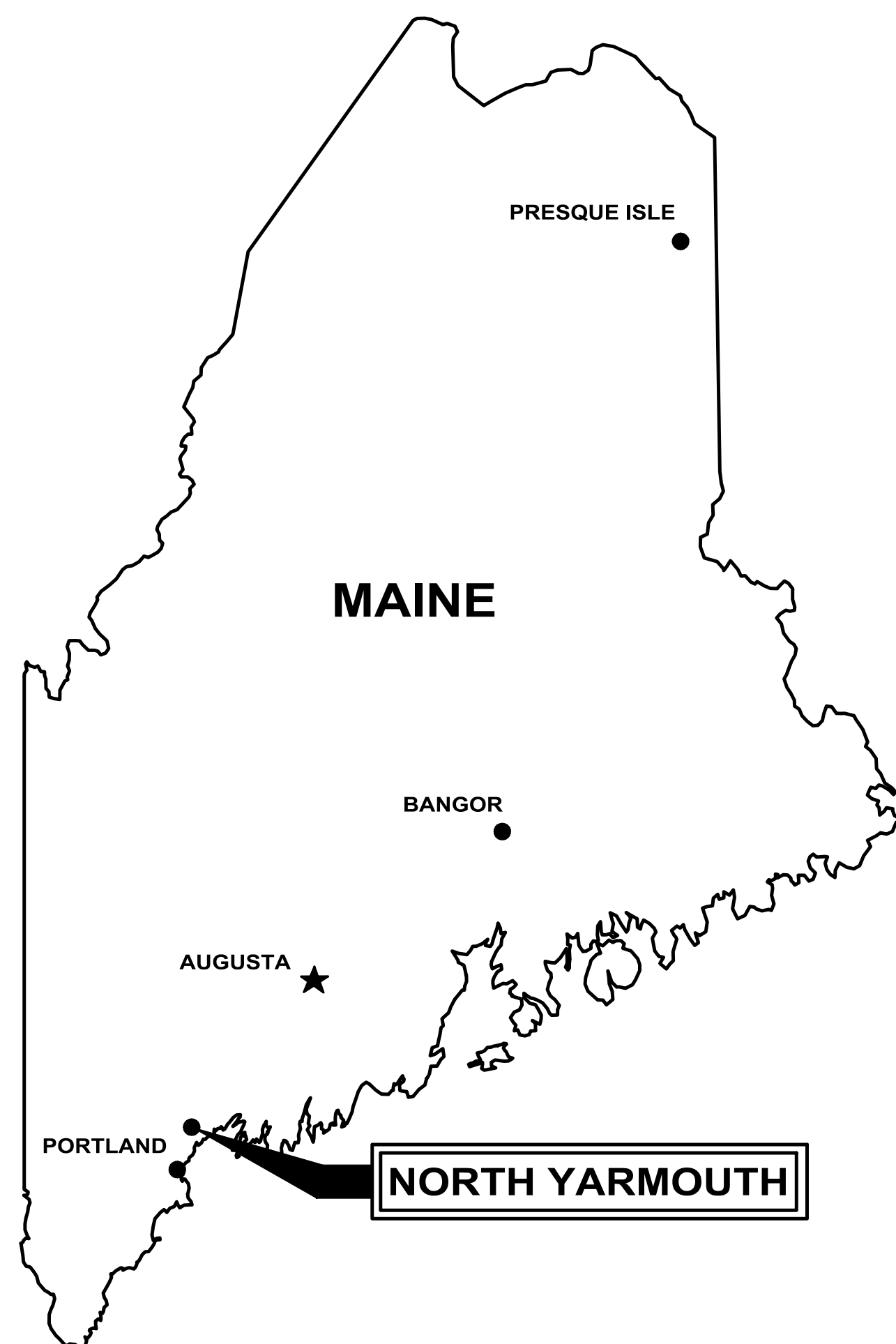
# YARMOUTH WATER DISTRICT, MAINE

## CONTRACT DRAWINGS FOR

# NORTH YARMOUTH BOOSTER PUMP STATION

## NORTH YARMOUTH, ME

JANUARY 2021  
PLANNING BOARD SUBMITTAL



### DRAWING INDEX

#### GENERAL

---

COVER SHEET

#### CIVIL

C-1

GENERAL NOTES, LEGEND, AND ABBREVIATIONS

C-2

EXISTING CONDITIONS PLAN

C-3

SITE LAYOUT, GRADING, AND PIPING PLAN

C-4

BUILDING ELEVATIONS

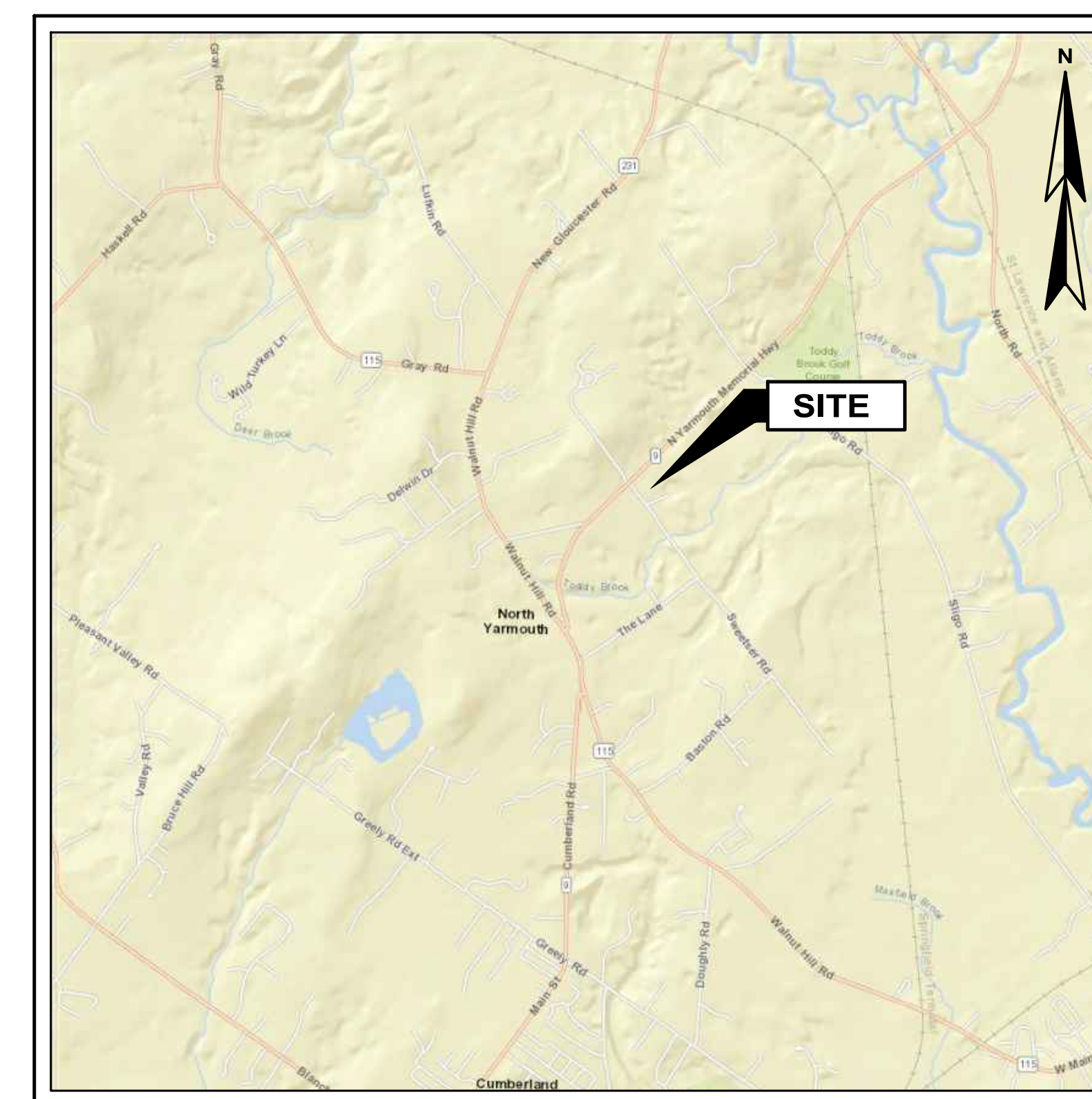
C-5

DETAILS

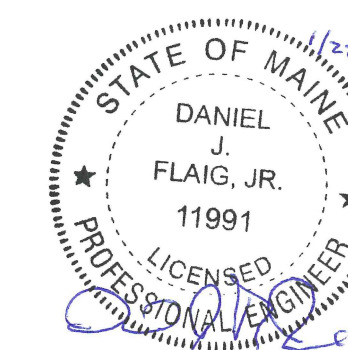
C-6

EROSION AND SEDIMENT CONTROL NOTES AND DETAILS

ISSUED FOR PERMITTING  
JANUARY 2021



LOCATION PLAN



**WRIGHT-PIERCE**   
Engineering a Better Environment

888.621.8156 | [www.wright-pierce.com](http://www.wright-pierce.com)

FOR REVIEW \_\_\_\_\_

FOR BIDDING \_\_\_\_\_

WP PROJECT No. 20451

NORTH YARMOUTH BOOSTER PUMP STATION  
SWEETSER ROAD, NORTH YARMOUTH  
1/22/2021  
MAP 008, LOT 29, 30, 31

UTILITY CONTACTS:

ENGINEER: WRIGHT-PIERCE
11 BOWDOIN MILL ISLAND, SUITE 140
TOPSHAM, ME 04086
PROJECT ENGINEER: DUSTIN LACOMBE
TEL: 207-798-3716
FAX: 207-729-8414

OWNER: YARMOUTH WATER DISTRICT
181 SLIGO ROAD
YARMOUTH, ME 04096
TEL: 207-846-5821

TELEPHONE: VERIZON
365 GORHAM RD
SOUTH PORTLAND, ME 04106
TEL: 207-773-1033

TOWN: TO VILLAGE SQUARE
NORTH YARMOUTH, ME 04097
DIRECTOR: CLARK BASTON
TEL: 207-829-3274

FIRE AND RESCUE: 763 WALNUT HILL ROAD
NORTH YARMOUTH, ME 04097
CHIEF: GREGORY PAYSON
TEL: 207-829-3025

ELECTRIC: CENTRAL MAINE POWER COMPANY
83 EDISON DRIVE
AUGUSTA, ME 04336
TEL: 1-800-565-0121

TOWN-PUBLIC WORKS: TO VILLAGE SQUARE
NORTH YARMOUTH, ME 04097
DIRECTOR: CLARK BASTON
CHIEF: 207-829-3274

CUMBERLAND COUNTY SHERIFF'S OFFICE: 36 COUNTY WAY
PORTLAND, ME 04102
TEL: 207-774-1444

CABLE: SPECTRUM
118 JOHNSON RD
PORTLAND, ME 04012
TEL: 207-253-2324

CIVIL SITE LAYOUT

- 1. ALL ELEVATIONS REFER TO THE NAVD 1988 DATUM. ORIENTATION IS GRID NORTH ON THE MAINE STATE PLANE COORDINATE SYSTEM. PROJECT BENCH MARK IS SHOWN ON THE DRAWINGS AND IS DERIVED FROM FALLA AND SONS LAND SURVEYS, INC. CONTRACTOR SHALL VERIFY BENCHMARK ELEVATIONS PRIOR TO USING IN CONSTRUCTION.
2. EXISTING CONDITIONS SITE PLAN DEVELOPED FROM SURVEY DRAWING PREPARED BY FALLA AND SONS LAND SURVEYS, INC. DATED 10/28/2020.

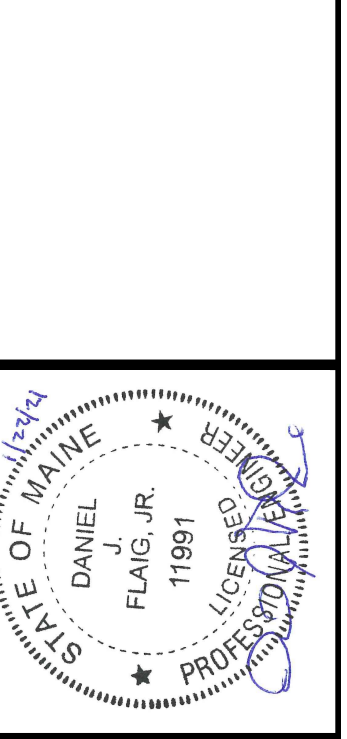
CIVIL ABBREVIATIONS

Table with 4 columns: Abbreviation, Description, Abbreviation, Description. Includes symbols for diameters, approved, buildings, catch basins, etc.

LEGEND

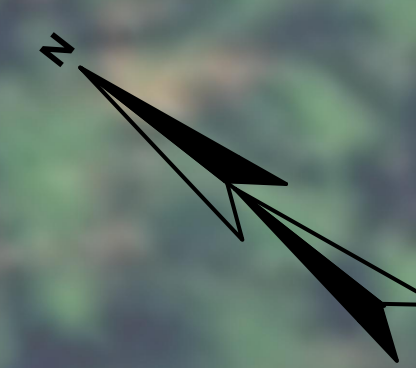
Legend table with columns: EXISTING, LEGEND, PROPOSED. Lists symbols for property lines, setbacks, easements, centerlines, pavements, etc.

Table with columns: NO, DESIGNED BY, CHECKED BY, DATE, APPROVED BY, DATE, PROJECT NO. Includes names like D. LACOMBE and D. METZ.

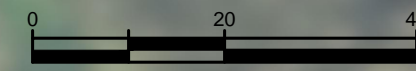


WRIGHT-PIERCE logo and contact information: Engineering a Better Environment, 888.621.8156 | www.wright-pierce.com

Project title block: YARMOUTH WATER DISTRICT, NORTH YARMOUTH BOOSTER PUMP STATION, NORTH YARMOUTH, ME. Includes 'DRAWING C-1' and 'ISSUED FOR PERMITTING JANUARY 2021'.



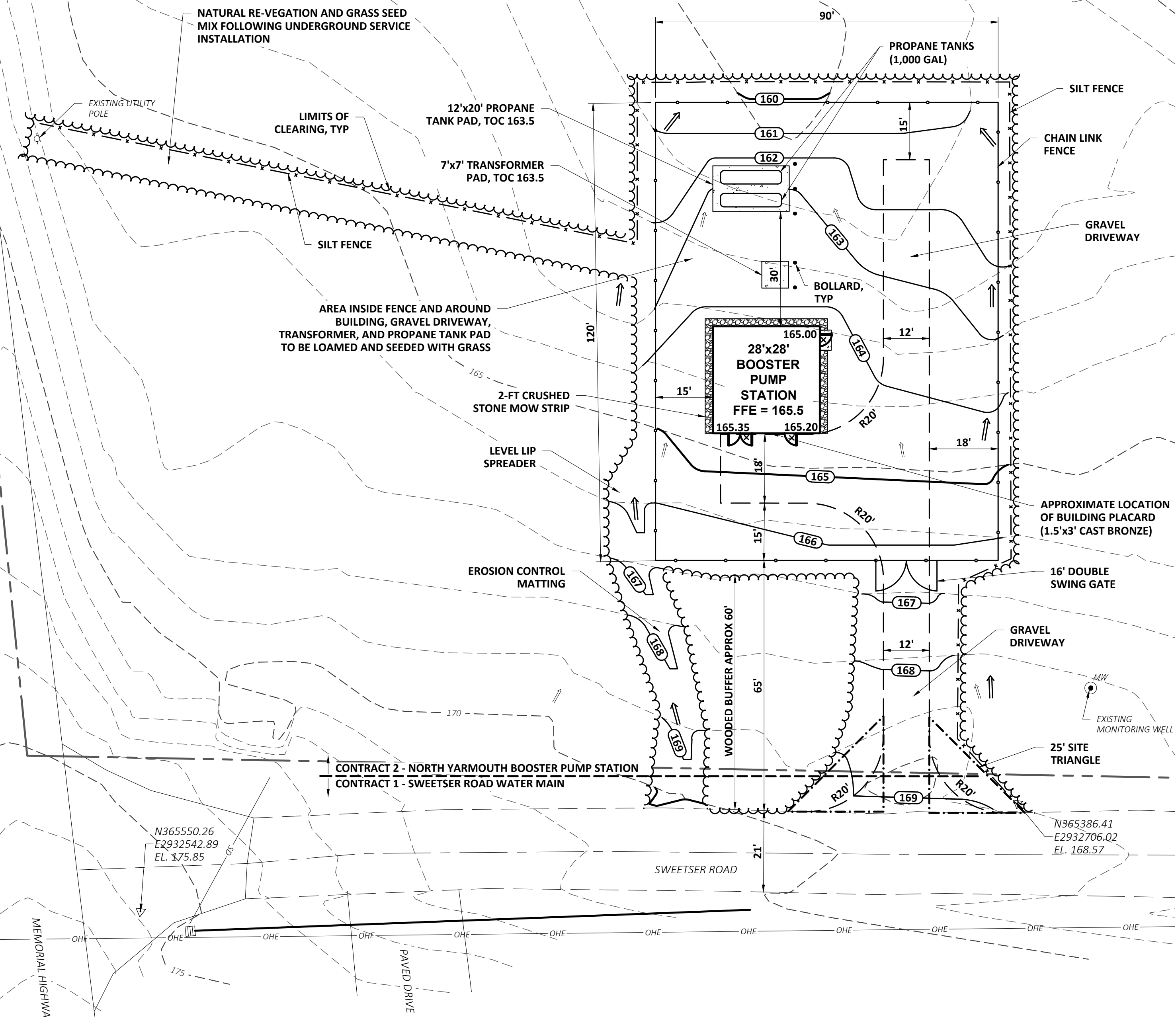
**EXISTING CONDITIONS PLAN**  
SCALE: 1"=20'



**ISSUED FOR PERMITTING**  
**JANUARY 2021**

<p><b>YARMOUTH WATER DISTRICT</b> NORTH YARMOUTH BOOSTER PUMP STATION NORTH YARMOUTH, ME</p> <p>EXISTING CONDITIONS PLAN</p>		<p><b>WRIGHT-PIERCE</b> Engineering a Better Environment 888.621.8156   www.wright-pierce.com</p>				<p>DESIGNED BY: D.LACOMBE C&amp;E CORP.: D.METZ CHECKED BY: D.LACOMBE DATE: 01/22/2021 APPROVED BY: D.FLAIG DATE: 01/22/2021 PROJECT NO.: 20451</p>		<p>NO. 1 SUBMISSIONS/REVISIONS PLANNING BOARD SUBMITTAL</p>		<p>APP'D. DATE D.FLAIG 07/21</p>	
<p><b>DRAWING</b> C-2</p>											

FARM AND FOREST DISTRICT	REQUIRED	PROVIDED
MINIMUM LOT AREA	3 ACRES	>3 ACRES
MAXIMUM RESIDENTIAL DENSITY	1 RESIDENTIAL UNIT PER 3 ACRES	N/A
MAXIMUM LOT COVERAGE	20%	<20%
MINIMUM STREET FRONTAGE	200 FT	>200 FT
MINIMUM FRONT SETBACK	50 FT	>50 FT
MINIMUM SIDE SETBACK	20 FT	>20 FT
MINIMUM REAR SETBACK	20 FT	>20 FT
MAXIMUM BUILDING HEIGHT	35 FT	<35 FT



APPROVED: TOWN OF NORTH YARMOUTH,  
NORTH YARMOUTH PLANNING BOARD

SIGNATURE \_\_\_\_\_ DATE \_\_\_\_\_

\_\_\_\_\_

\_\_\_\_\_

\_\_\_\_\_

\_\_\_\_\_

\_\_\_\_\_

\_\_\_\_\_

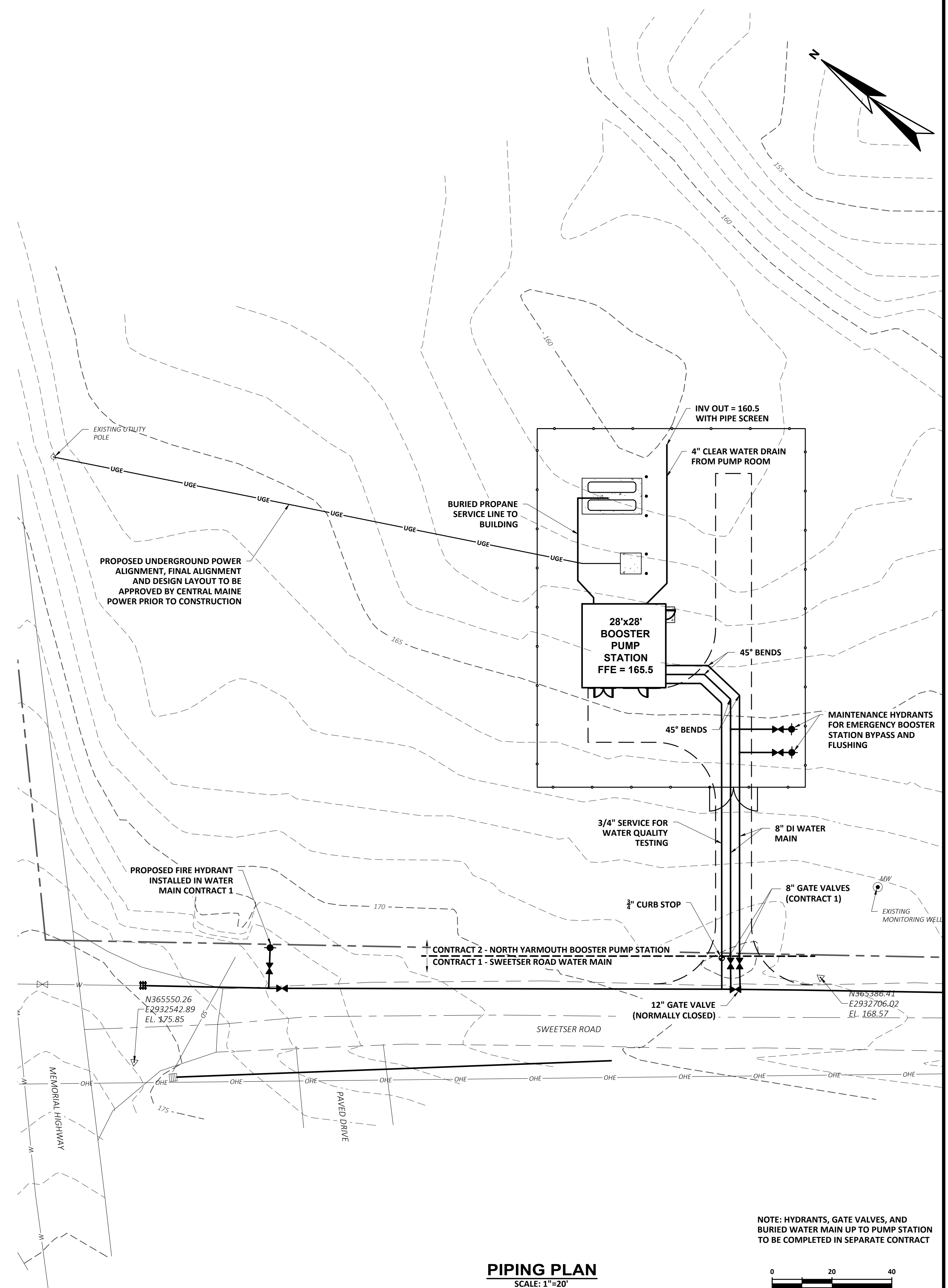
\_\_\_\_\_

\_\_\_\_\_

\_\_\_\_\_

\_\_\_\_\_

**SITE LAYOUT AND GRADING PLAN**  
SCALE: 1"=20'



**PIPING PLAN**  
SCALE: 1"=20'



NOTE: HYDRANTS, GATE VALVES, AND BURIED WATER MAIN UP TO PUMP STATION TO BE COMPLETED IN SEPARATE CONTRACT

**ISSUED FOR PERMITTING**  
**JANUARY 2021**

APP'D	DATE
D.FLA	01/21
SUBMISSIONS/REVISIONS	
NO	DESCRIPTION
1	PLANNING BOARD SUBMITTAL
DESIGNED BY:	D.LACOMBE
CAD CORP.:	D.METZ
CHECKED BY:	D.LACOMBE
DATE:	01/22/2021
APPROVED BY:	D.FLAUG
DATE:	01/22/2021
PROJECT NO.:	20651

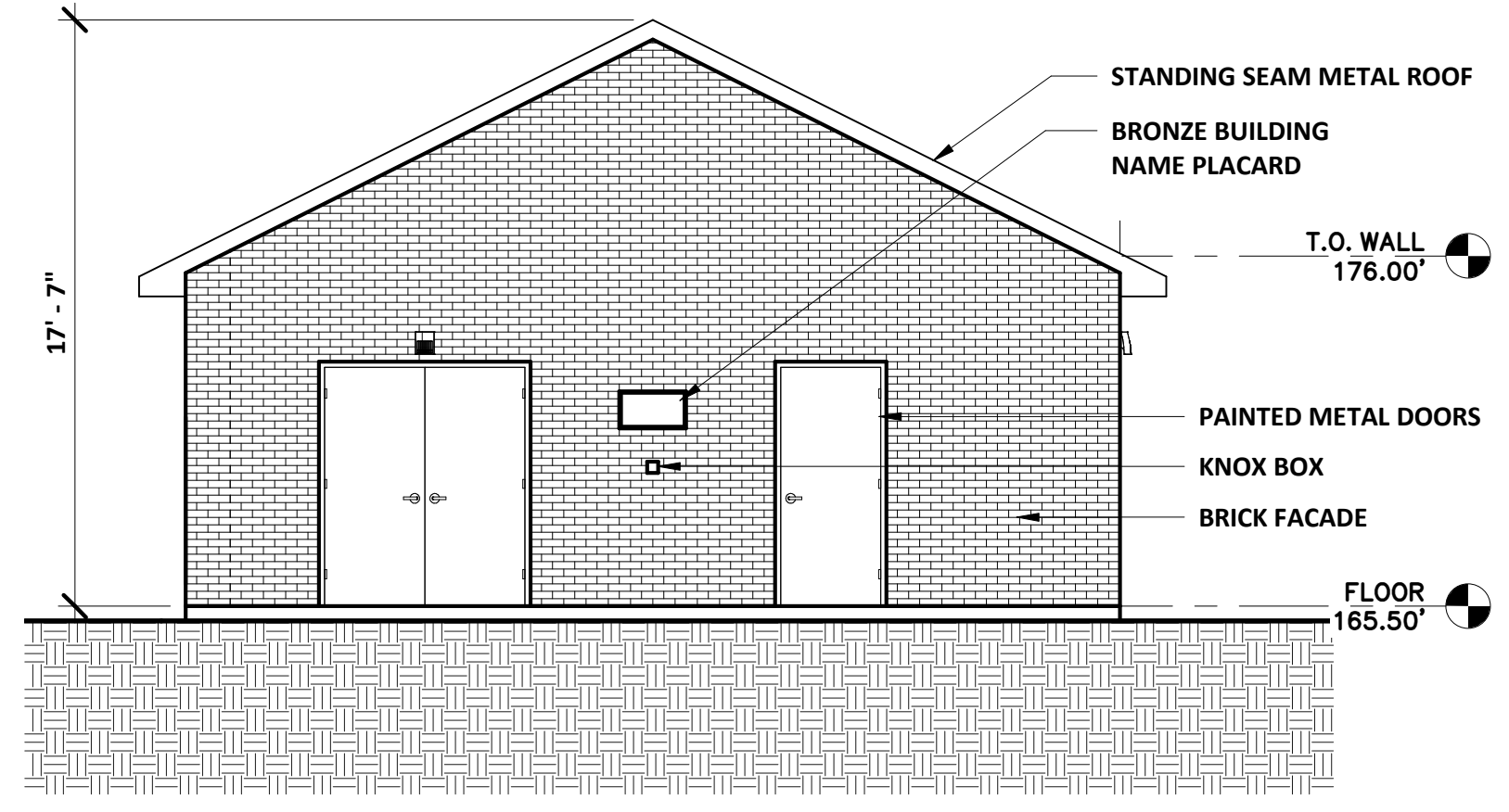
**WRIGHT-PIERCE**  
Engineering a Better Environment  
888.621.8156 | www.wright-pierce.com

**YARMOUTH WATER DISTRICT**  
**NORTH YARMOUTH**  
**BOOSTER PUMP STATION**  
**NORTH YARMOUTH, ME**

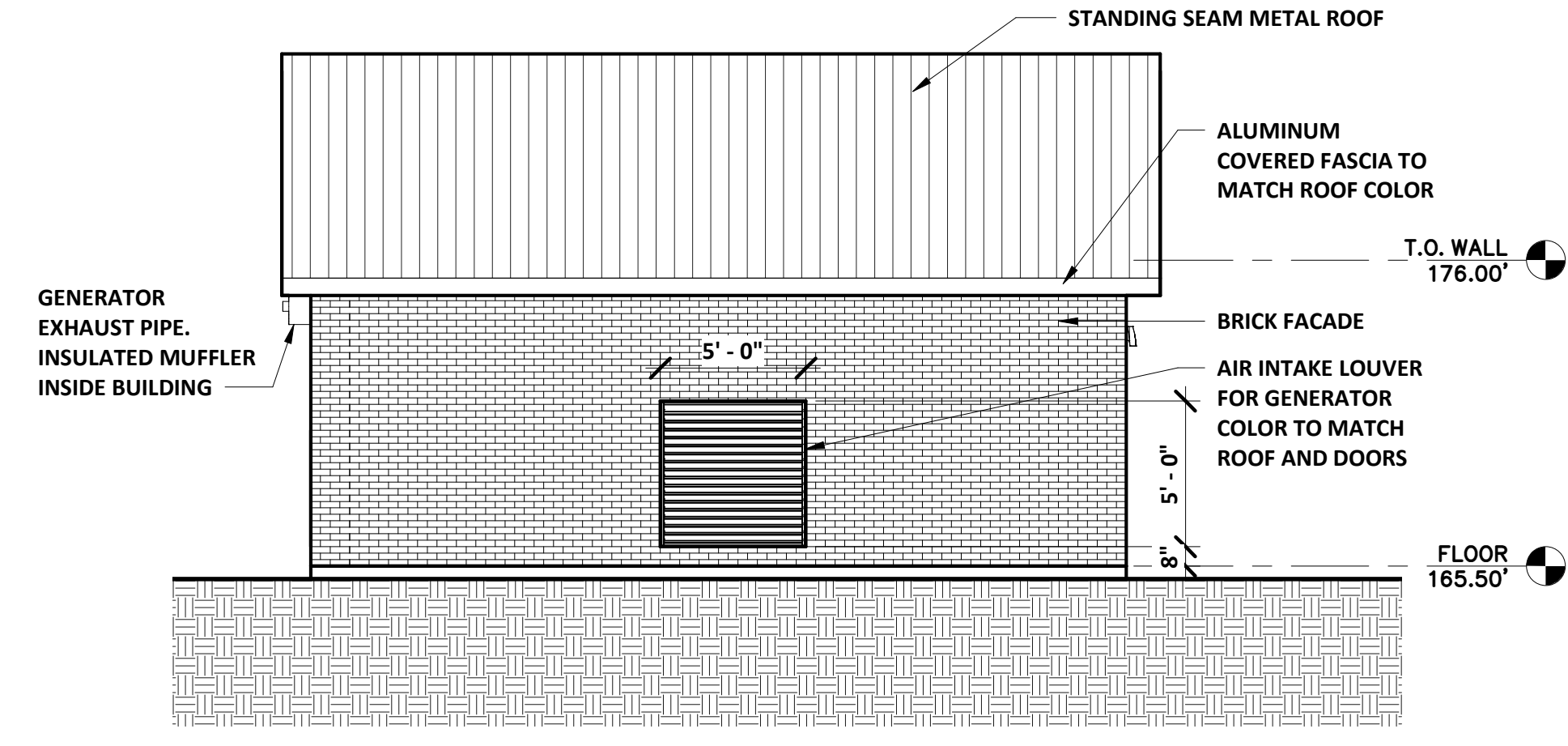
SITE LAYOUT, GRADING AND PIPING PLAN

**DRAWING**  
C-3

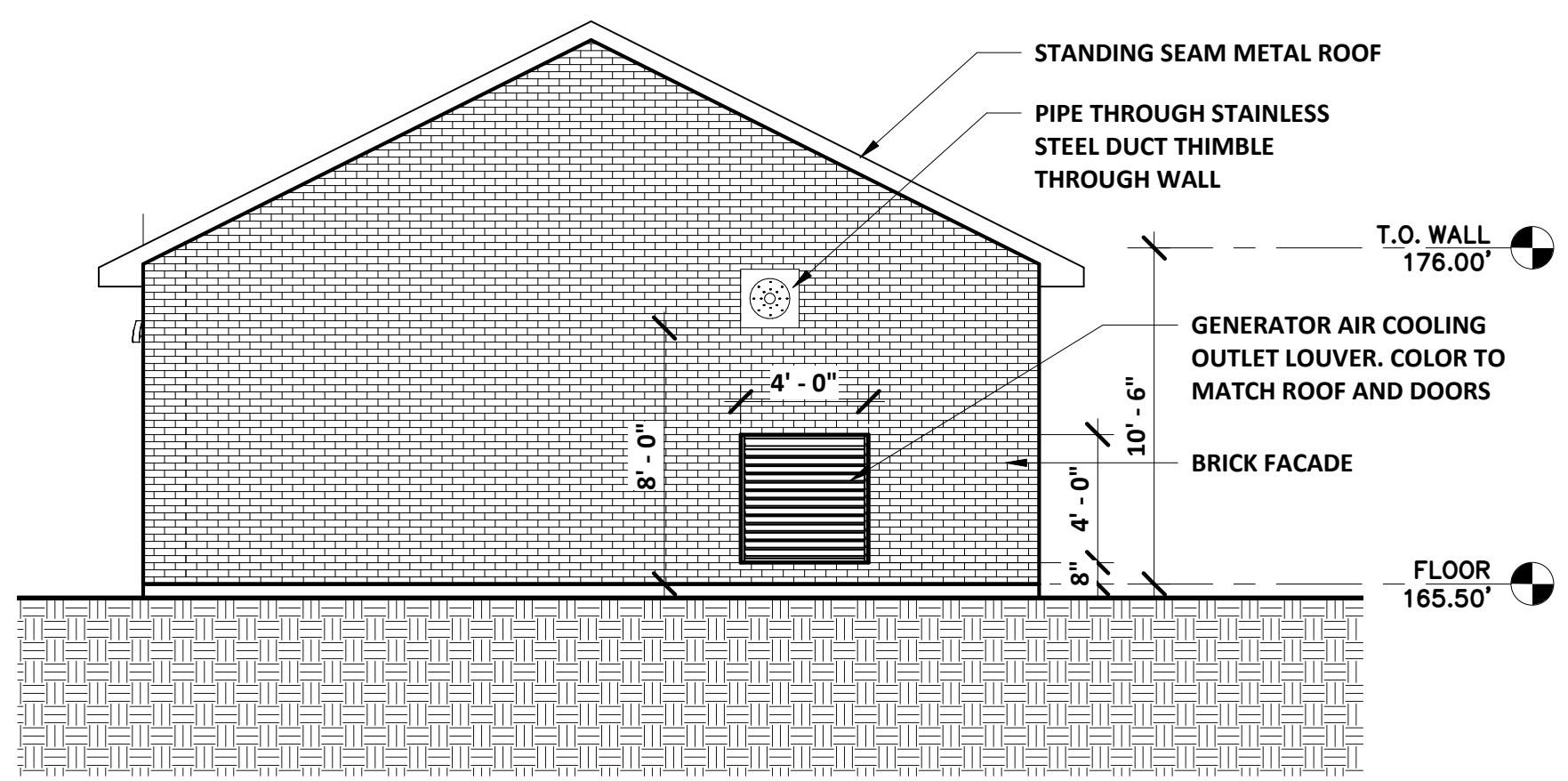
**BOOSTER PUMP STATION**  
EXTERIOR ELEVATION = 28'x28'



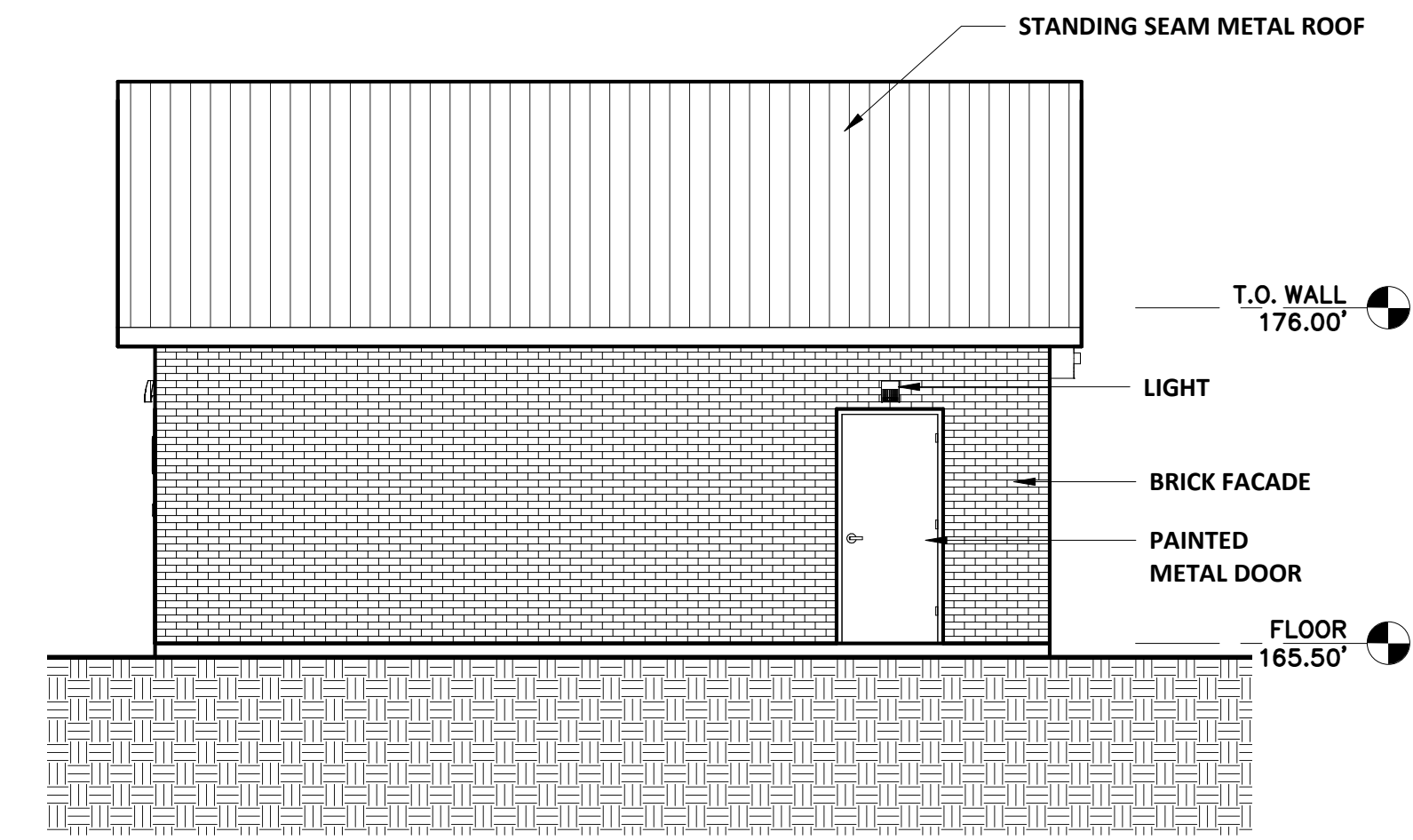
**SOUTH ELEVATION**  
SCALE: 3/16" = 1'-0"



**WEST ELEVATION**  
SCALE: 3/16" = 1'-0"



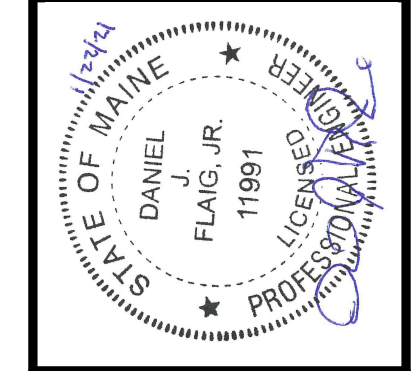
**NORTH ELEVATION**  
SCALE: 3/16" = 1'-0"



**EAST ELEVATION**  
SCALE: 3/16" = 1'-0"

NO	SUBMISSIONS/REVISIONS	APP'D	DATE
1	PLANNING BOARD SUBMITTAL	D.FLA	03/21

DESIGNED BY: E. SHIELDS  
 CAD CORP.: D. METZ  
 CAD: E. SHIELDS  
 CREATED BY: E. SHIELDS  
 DATE: 01/22/2021  
 APPROVED BY: D. FLAIG  
 DATE: 01/24/2021  
 PROJECT NO.: 20851

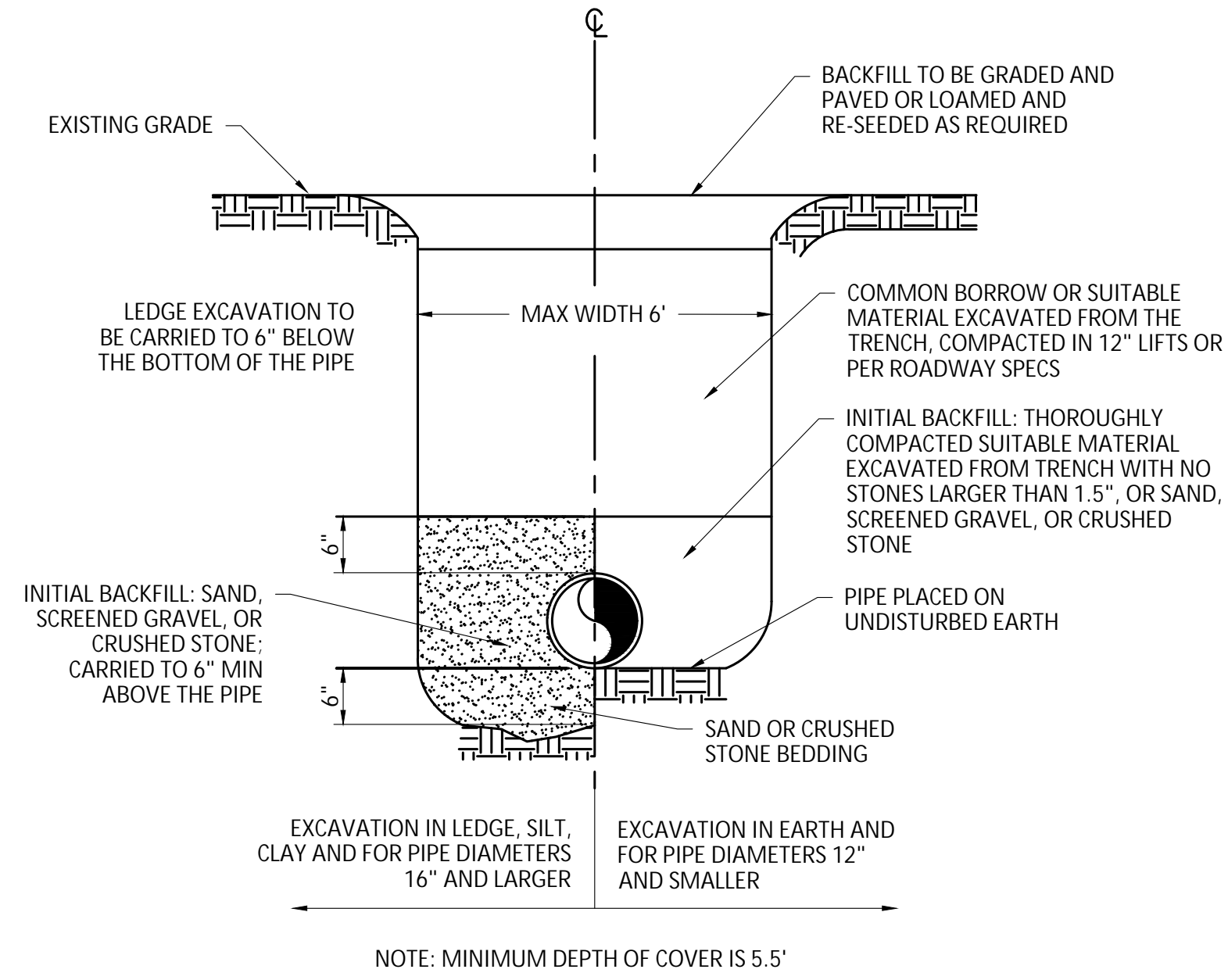


**WRIGHT-PIERCE**  
 Engineering a Better Environment  
 888.621.8156 | www.wright-pierce.com

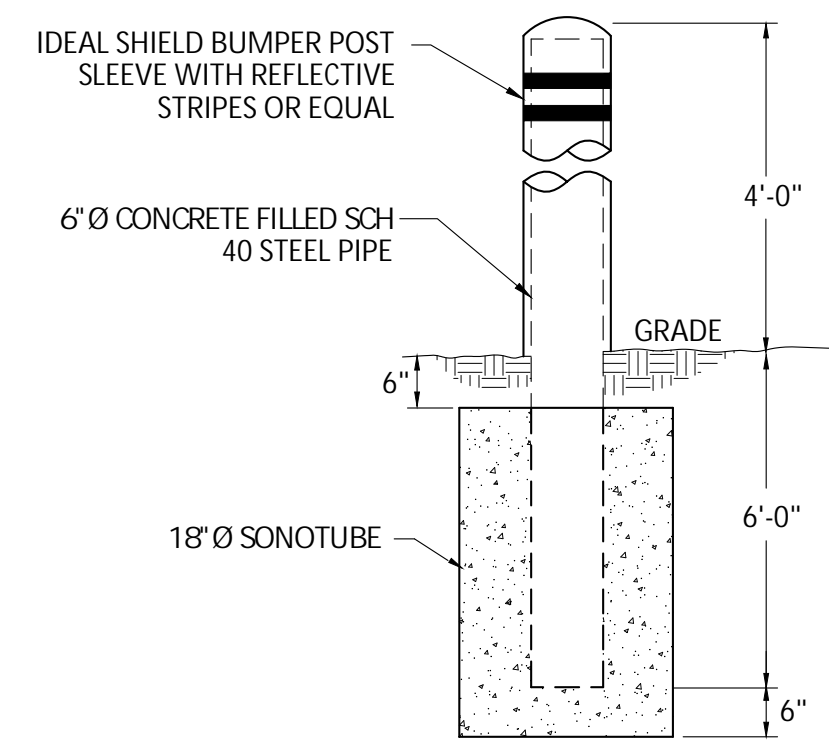
YARMOUTH WATER DISTRICT  
 NORTH YARMOUTH  
 BOOSTER PUMP STATION  
 NORTH YARMOUTH, ME  
 BUILDING ELEVATIONS

ISSUED FOR PERMITTING  
 JANUARY 2021

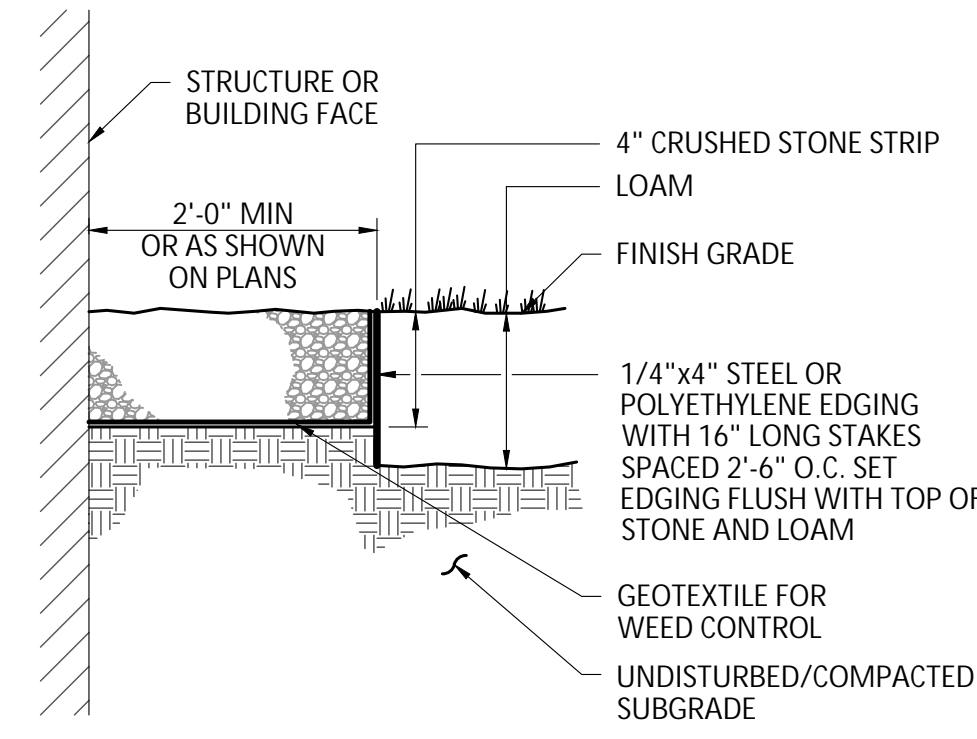
DRAWING  
 C-4



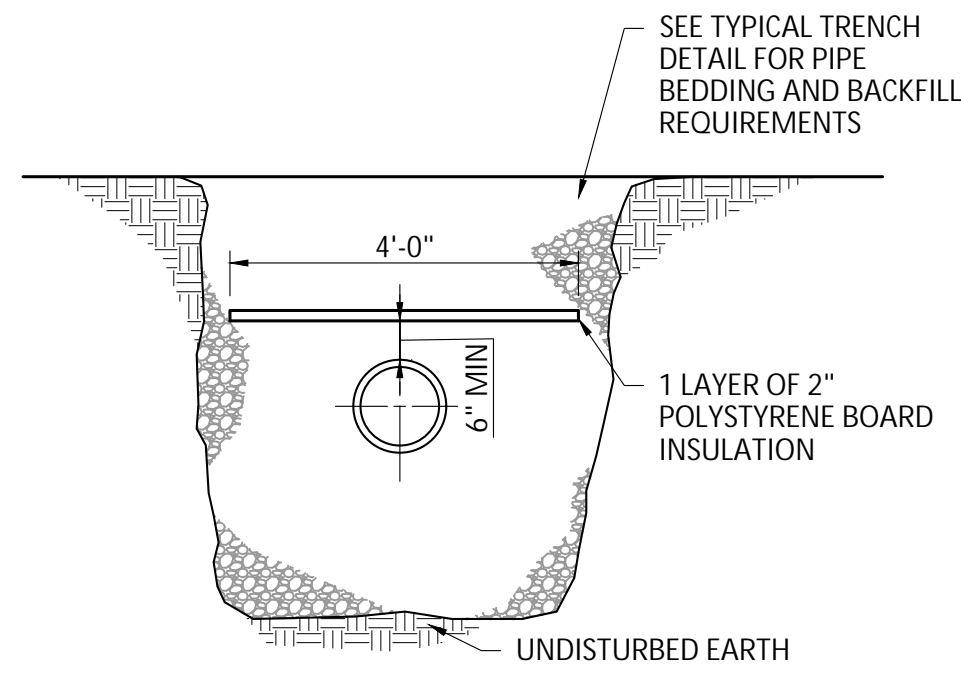
**PIPE TRENCH**  
SCALE: "NTS"



**BOLLARD**  
SCALE: "NTS"

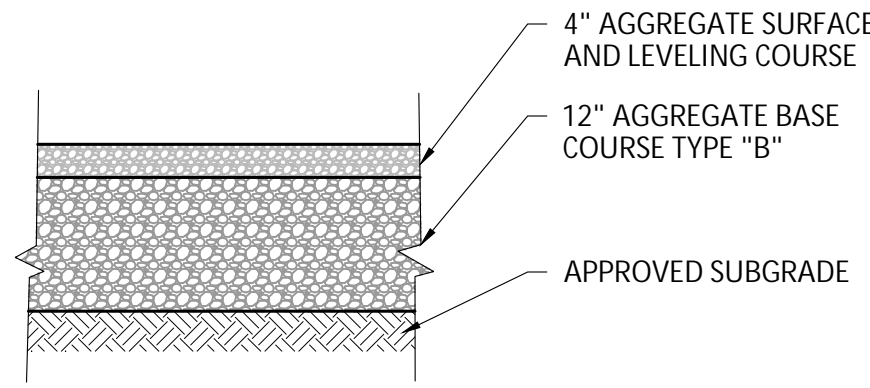


**CRUSHED STONE MOWING STRIP**  
SCALE: "NTS"

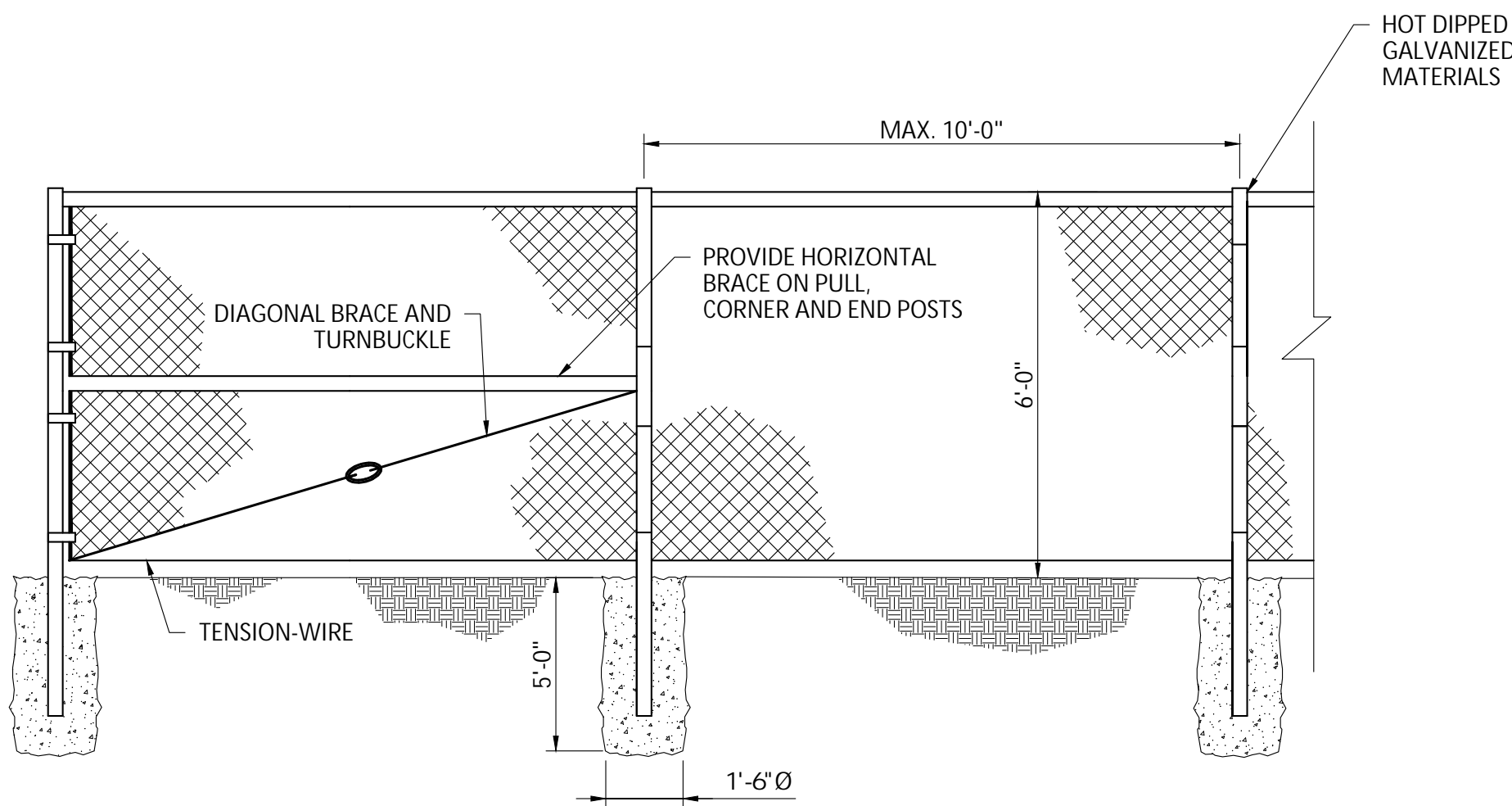


NOTE: TRENCH PIPE INSULATION TO BE USED WHERE DEPTH OF COVER IS LESS THAN 5 FEET OR AS DIRECTED BY THE ENGINEER

**TRENCH PIPE INSULATION**  
SCALE: NTS

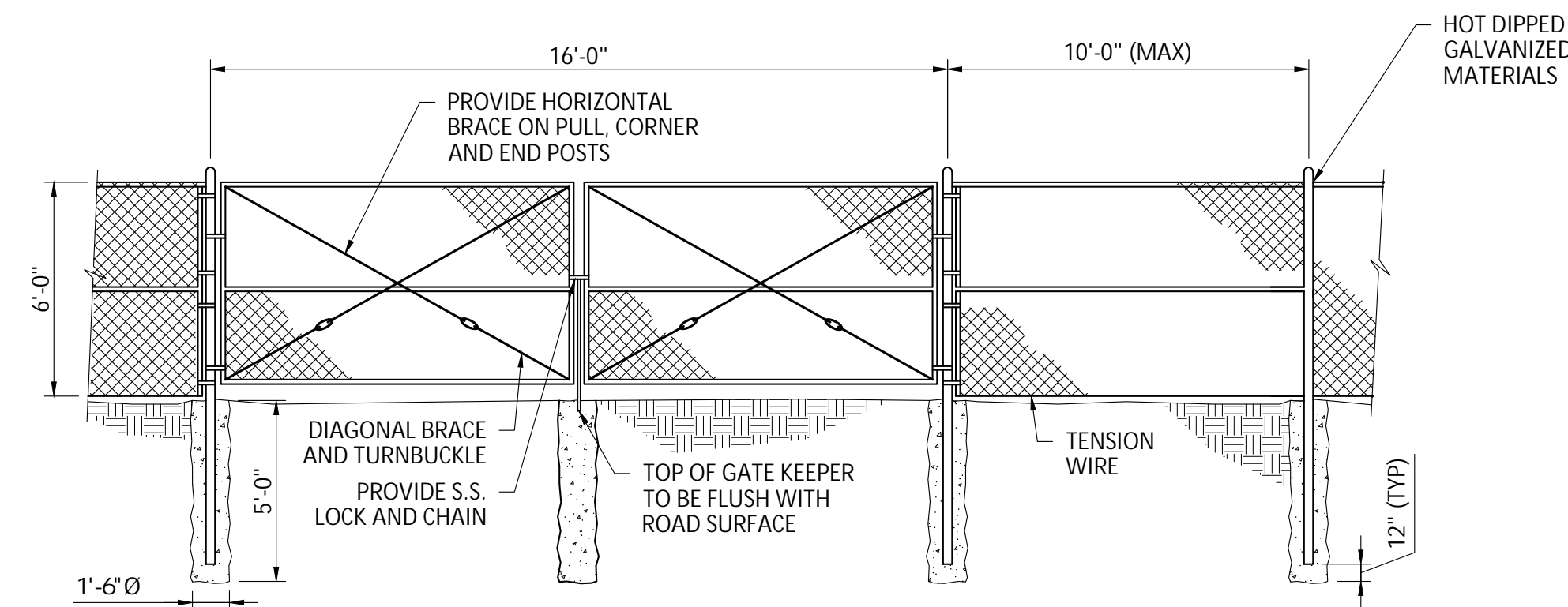


**TYPICAL SECTION OF GRAVEL AREAS**  
SCALE: NTS



NOTES:  
1. SECURE POSTS IN CONCRETE AS SHOWN AT PULL, CORNER AND END POSTS (INCLUDING GATE POSTS)  
2. IF CHAINLINK FENCE IS INSTALLED IN UNFRACTURED LEDGE, POST SHALL PENETRATE 2'-0" INTO THE LEDGE AND SHALL BE GROUTED INTO 6" Ø HOLE.

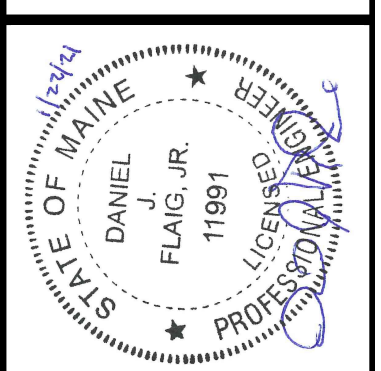
**CHAINLINK FENCE**  
SCALE: "NTS"



NOTES:  
1. SECURE POSTS IN CONCRETE AS SHOWN AT PULL, CORNER AND END POSTS (INCLUDING GATE POSTS)  
2. IF CHAINLINK FENCE IS INSTALLED IN UNFRACTURED LEDGE, POST SHALL PENETRATE 2'-0" INTO THE LEDGE AND SHALL BE GROUTED INTO 6" Ø HOLE.

**CHAINLINK FENCE AND LOCKING DOUBLE GATE**  
SCALE: "NTS"

NO	DESIGNED BY	DATE	APPROVED BY	DATE
1	D. LACOMBE	07/21	D. LACOMBE	07/21
2	D. METZ		D. METZ	
3	D. METZ		D. METZ	
4	D. LACOMBE		D. LACOMBE	
5	D. LACOMBE		D. LACOMBE	
6	D. LACOMBE		D. LACOMBE	
7	D. LACOMBE		D. LACOMBE	
8	D. LACOMBE		D. LACOMBE	
9	D. LACOMBE		D. LACOMBE	
10	D. LACOMBE		D. LACOMBE	
11	D. LACOMBE		D. LACOMBE	
12	D. LACOMBE		D. LACOMBE	
13	D. LACOMBE		D. LACOMBE	
14	D. LACOMBE		D. LACOMBE	
15	D. LACOMBE		D. LACOMBE	
16	D. LACOMBE		D. LACOMBE	
17	D. LACOMBE		D. LACOMBE	
18	D. LACOMBE		D. LACOMBE	
19	D. LACOMBE		D. LACOMBE	
20	D. LACOMBE		D. LACOMBE	
21	D. LACOMBE		D. LACOMBE	
22	D. LACOMBE		D. LACOMBE	
23	D. LACOMBE		D. LACOMBE	
24	D. LACOMBE		D. LACOMBE	
25	D. LACOMBE		D. LACOMBE	
26	D. LACOMBE		D. LACOMBE	
27	D. LACOMBE		D. LACOMBE	
28	D. LACOMBE		D. LACOMBE	
29	D. LACOMBE		D. LACOMBE	
30	D. LACOMBE		D. LACOMBE	
31	D. LACOMBE		D. LACOMBE	
32	D. LACOMBE		D. LACOMBE	
33	D. LACOMBE		D. LACOMBE	
34	D. LACOMBE		D. LACOMBE	
35	D. LACOMBE		D. LACOMBE	
36	D. LACOMBE		D. LACOMBE	
37	D. LACOMBE		D. LACOMBE	
38	D. LACOMBE		D. LACOMBE	
39	D. LACOMBE		D. LACOMBE	
40	D. LACOMBE		D. LACOMBE	
41	D. LACOMBE		D. LACOMBE	
42	D. LACOMBE		D. LACOMBE	
43	D. LACOMBE		D. LACOMBE	
44	D. LACOMBE		D. LACOMBE	
45	D. LACOMBE		D. LACOMBE	
46	D. LACOMBE		D. LACOMBE	
47	D. LACOMBE		D. LACOMBE	
48	D. LACOMBE		D. LACOMBE	
49	D. LACOMBE		D. LACOMBE	
50	D. LACOMBE		D. LACOMBE	
51	D. LACOMBE		D. LACOMBE	
52	D. LACOMBE		D. LACOMBE	
53	D. LACOMBE		D. LACOMBE	
54	D. LACOMBE		D. LACOMBE	
55	D. LACOMBE		D. LACOMBE	
56	D. LACOMBE		D. LACOMBE	
57	D. LACOMBE		D. LACOMBE	
58	D. LACOMBE		D. LACOMBE	
59	D. LACOMBE		D. LACOMBE	
60	D. LACOMBE		D. LACOMBE	
61	D. LACOMBE		D. LACOMBE	
62	D. LACOMBE		D. LACOMBE	
63	D. LACOMBE		D. LACOMBE	
64	D. LACOMBE		D. LACOMBE	
65	D. LACOMBE		D. LACOMBE	
66	D. LACOMBE		D. LACOMBE	
67	D. LACOMBE		D. LACOMBE	
68	D. LACOMBE		D. LACOMBE	
69	D. LACOMBE		D. LACOMBE	
70	D. LACOMBE		D. LACOMBE	
71	D. LACOMBE		D. LACOMBE	
72	D. LACOMBE		D. LACOMBE	
73	D. LACOMBE		D. LACOMBE	
74	D. LACOMBE		D. LACOMBE	
75	D. LACOMBE		D. LACOMBE	
76	D. LACOMBE		D. LACOMBE	
77	D. LACOMBE		D. LACOMBE	
78	D. LACOMBE		D. LACOMBE	
79	D. LACOMBE		D. LACOMBE	
80	D. LACOMBE		D. LACOMBE	
81	D. LACOMBE		D. LACOMBE	
82	D. LACOMBE		D. LACOMBE	
83	D. LACOMBE		D. LACOMBE	
84	D. LACOMBE		D. LACOMBE	
85	D. LACOMBE		D. LACOMBE	
86	D. LACOMBE		D. LACOMBE	
87	D. LACOMBE		D. LACOMBE	
88	D. LACOMBE		D. LACOMBE	
89	D. LACOMBE		D. LACOMBE	
90	D. LACOMBE		D. LACOMBE	
91	D. LACOMBE		D. LACOMBE	
92	D. LACOMBE		D. LACOMBE	
93	D. LACOMBE		D. LACOMBE	
94	D. LACOMBE		D. LACOMBE	
95	D. LACOMBE		D. LACOMBE	
96	D. LACOMBE		D. LACOMBE	
97	D. LACOMBE		D. LACOMBE	
98	D. LACOMBE		D. LACOMBE	
99	D. LACOMBE		D. LACOMBE	
100	D. LACOMBE		D. LACOMBE	



**WRIGHT-PIERCE**  
Engineering a Better Environment  
888.621.8156 | www.wright-pierce.com

YARMOUTH WATER DISTRICT  
NORTH YARMOUTH  
BOOSTER PUMP STATION  
NORTH YARMOUTH, ME

DETAILS  
DRAWING  
C-5

ISSUED FOR PERMITTING  
JANUARY 2021

