



Community Resilience Partnership

North Yarmouth Community Workshop

AGENDA



1. Community Resilience Partnership
2. Climate Hazards and Impacts
3. Enrollment Materials
4. Overview of priority action areas
5. Questions and Discussion

1

Community Resilience Partnership

Community Resilience Partnership

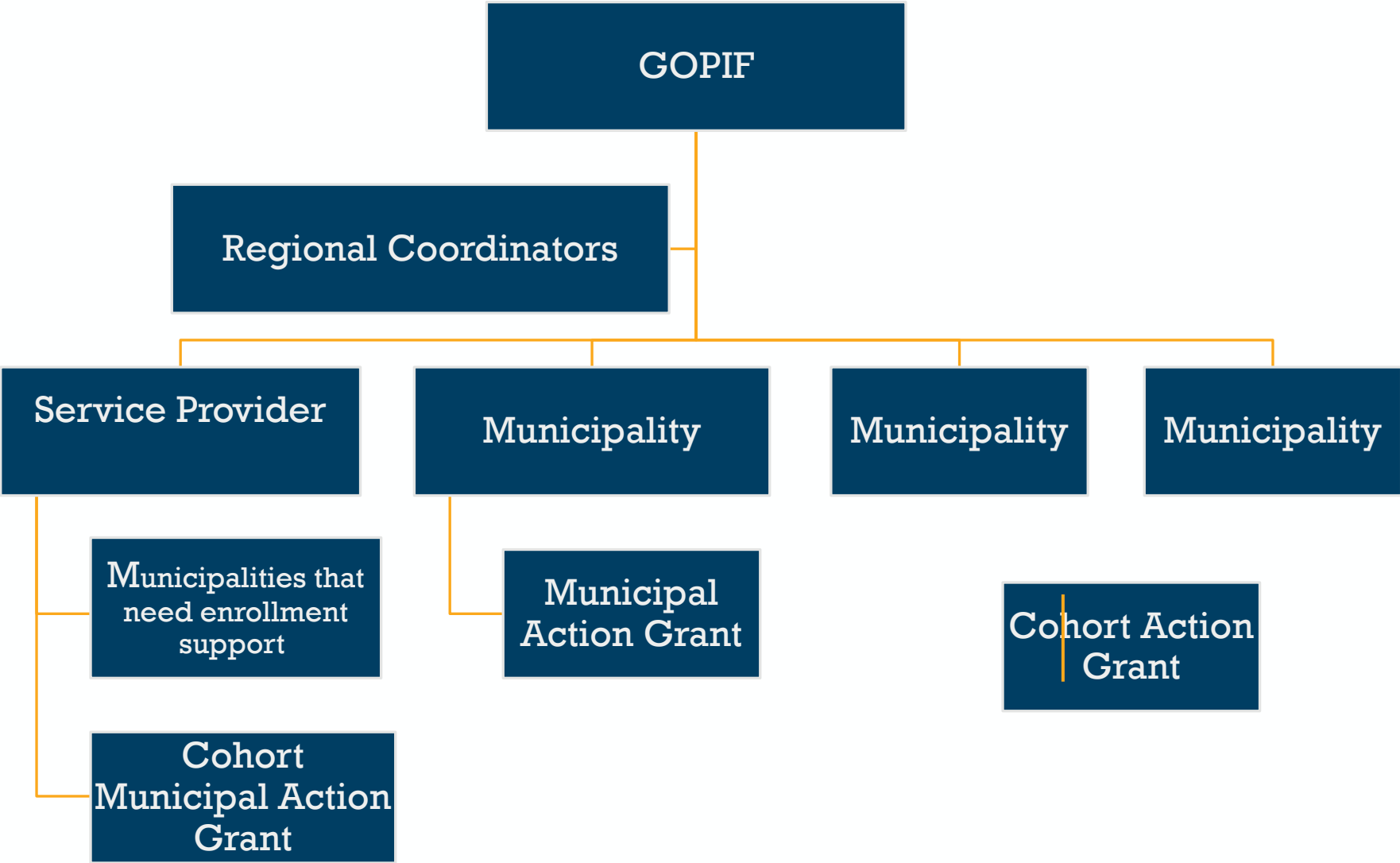
Leverage state support for municipal climate action

Grants awarded for:

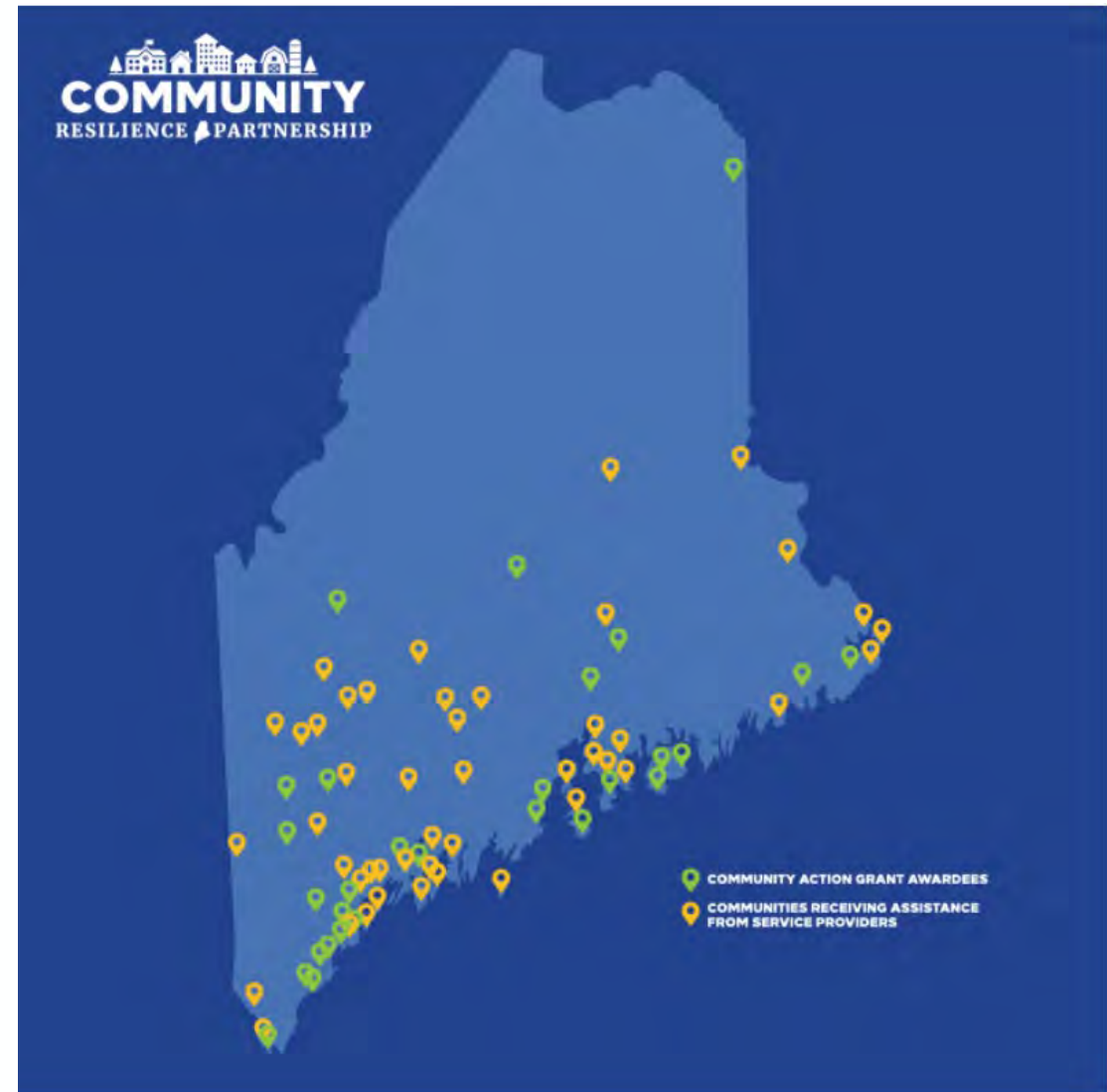
- Service Provider
- Community Action Grants



GOPIF Community Resilience Partnership Grants



COMMUNITY ACTION GRANTS



Up to \$50,000 per community

CRP AWARDS IN THE REGION



Community Action Grants

- Windham: Town Energy Plan
- Bridgton: Open Space Plan
- Portland: Climate Resiliency Zoning
- South Portland: Street Design

Climate Action Plans

- Portland/South Portland
- Cumberland
- Falmouth

SERVICE PROVIDER GOALS



Outcomes of this process for your town:

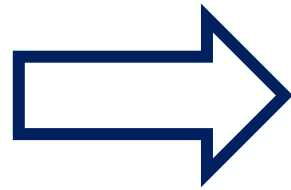
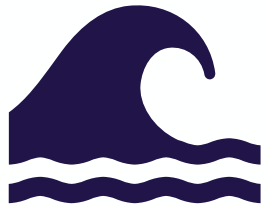
- Enrollment in partnership and access to funding
- Community engagement and prioritization of initial climate resilience and clean energy actions
- Apply for community action grant in September

2

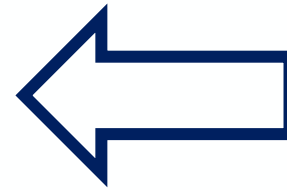
Climate Hazards and Impacts

Definitions

Climate Hazards



Climate Impacts



Social Vulnerabilities



Maine Climate Hazards and Impacts

Maine is experiencing an increase in local climate hazards NOW

Climate Hazards

Impacts

Sea Level Rise

Coastal Erosion

Coastal Flooding

Changing Ecosystems

Ocean Warming and Acidification

Changing Marine Ecosystems

Harm to Fishing Industry

Increased Precipitation and Storm Intensity

Coastal and Inland Flooding

Overburdened Wastewater System

Declining Water Quality

Warming, More Variable Temperatures

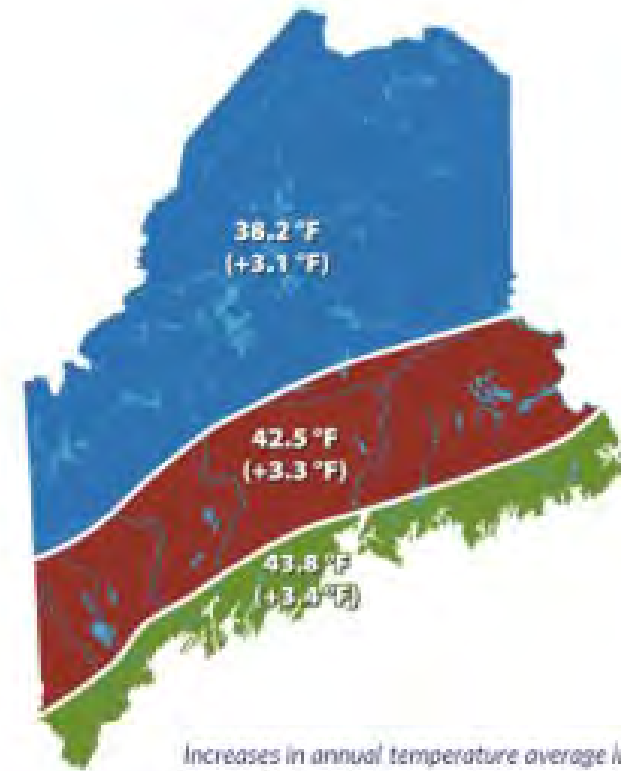
Increased Energy Consumption for Summer Cooling

Increase in Vector-borne Diseases

Changing Terrestrial Ecosystems



WARMER, MORE VARIABLE TEMPERATURES

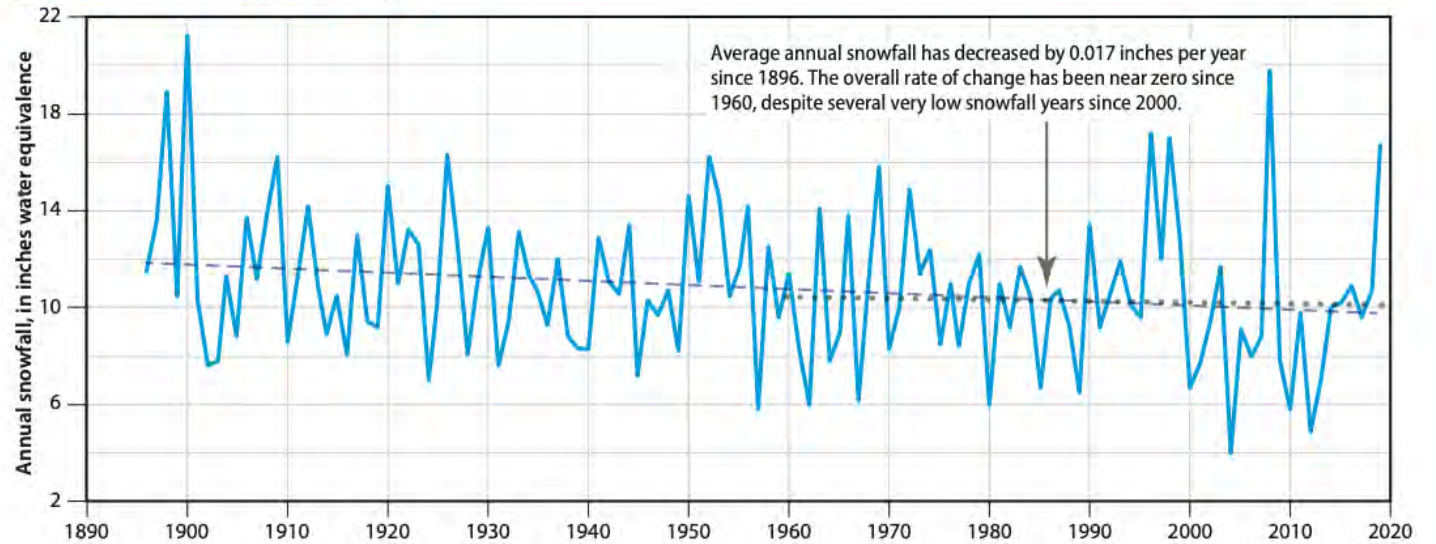


Increases in annual temperature average in
Maine since 1895

- State has warmed more than 3°F since 1895
- Maine can expect 36 high heat days (over 90°F) per year by 2100, compared to one per year on average from 1971 to 2000

CHANGING PRECIPITATION

Maine Annual Snowfall, 1896–2019

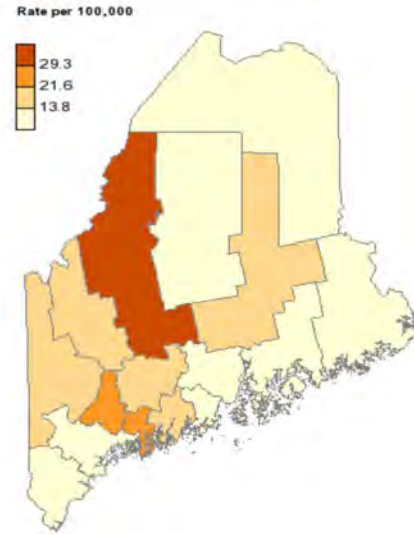


- Average yearly precipitation in Maine increased by 15% since 1895
- Anticipated additional 5% increase in precipitation by 2050
- Likely increase intensity and variability of precipitation
- Likely change in type of precipitation

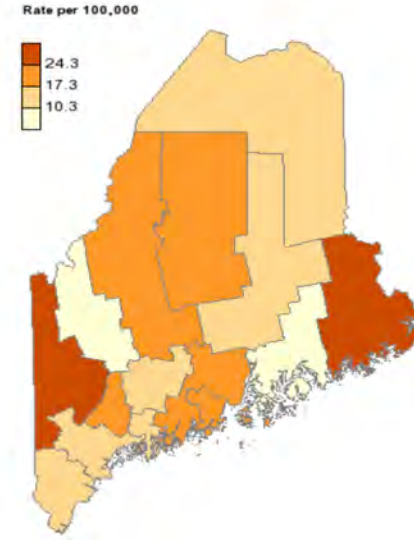
WHAT THIS MEANS FOR YOU

Climate Impacts

Rate of Heat Illness ED Visits
by County, Maine 2003
Place Based on: Residence



Rate of Heat Illness ED Visits
by County, Maine 2017
Place Based on: Residence



Rate of Heat Illness Emergency Department Visits
by County in Maine from Maine CDC

Health Risks

Shifting Ecosystems



Strain on Critical Infrastructure



WHAT THIS MEANS
FOR YOU

Changing Natural Resource Economy



Climate Impacts

Decline in Water Quality



WHAT THIS MEANS FOR YOU



Climate Impacts

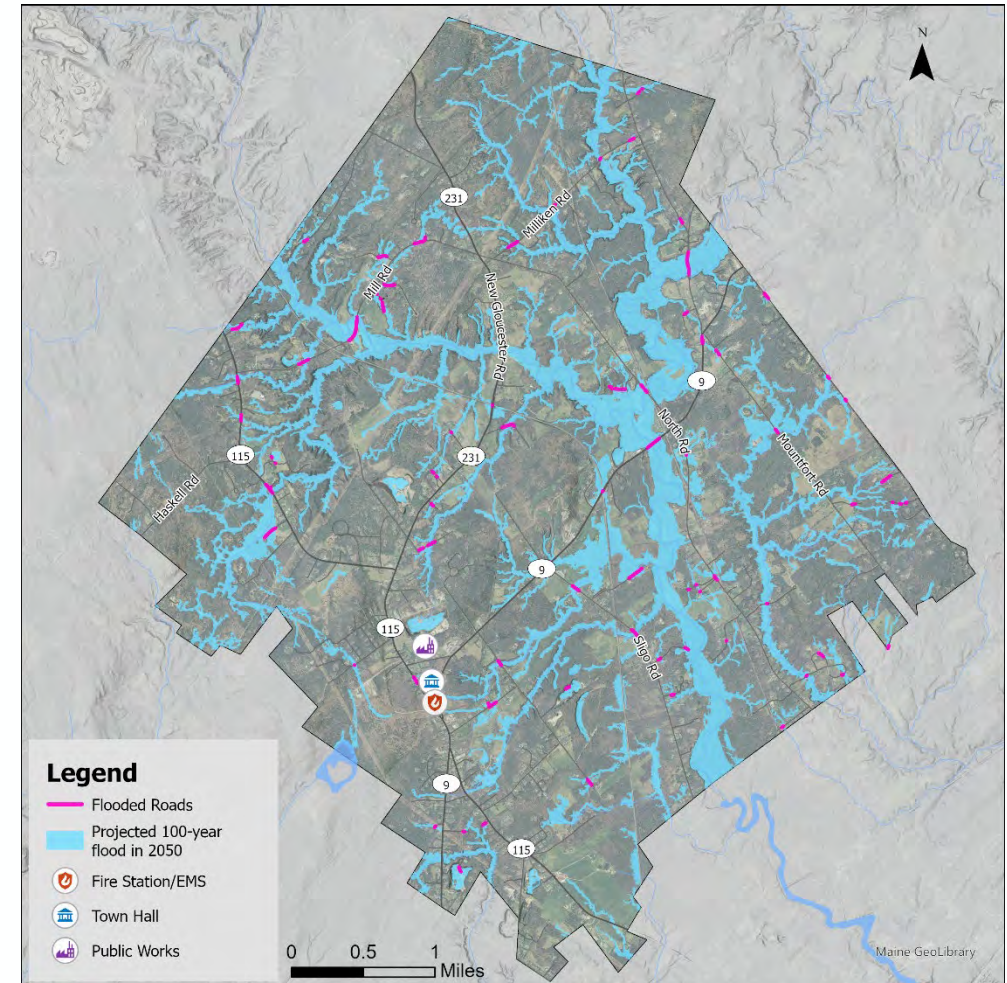


Flooding and Erosion

North Yarmouth Flooding

Impacts municipal infrastructure, homes, people

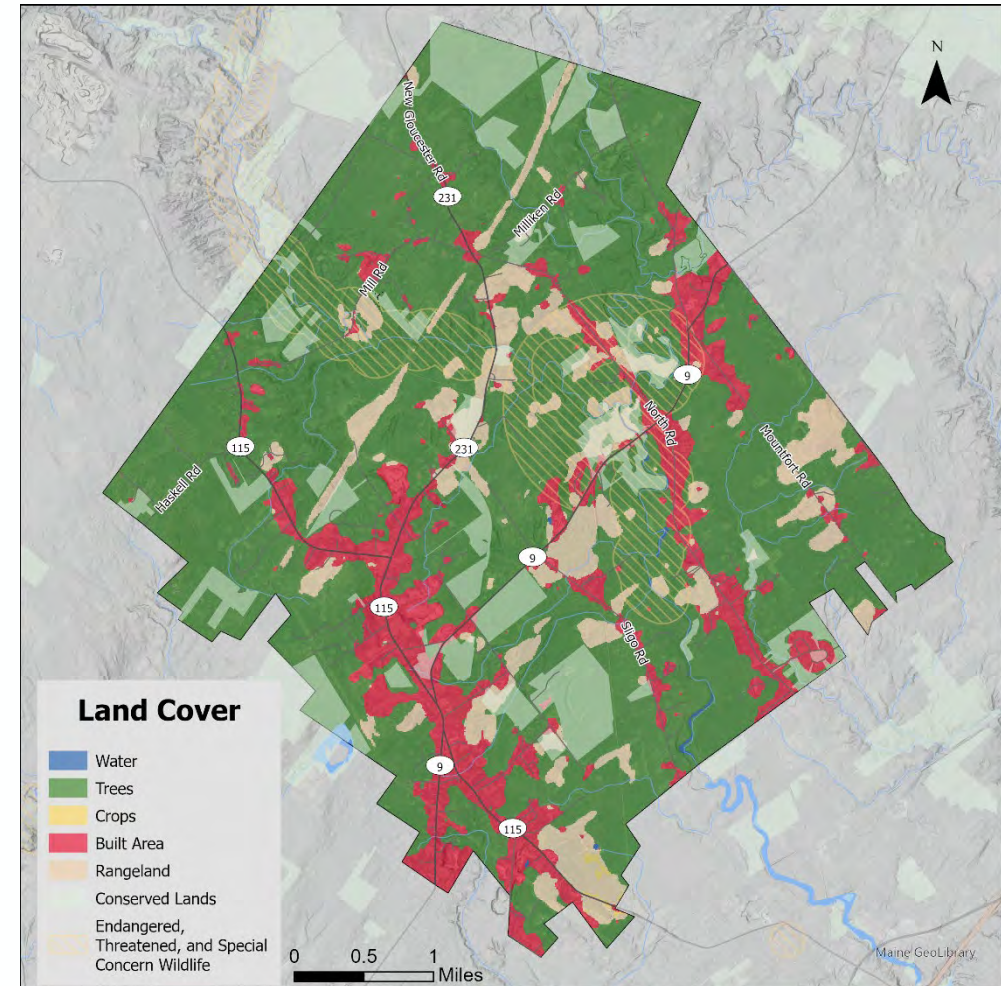
- 100-yr flood event in 2050 - portions of over 50 roads will be flooded
- Potential for neighborhoods to be cut off from access to services



North Yarmouth Ecosystems

Key habitats and ecosystem resources at risk

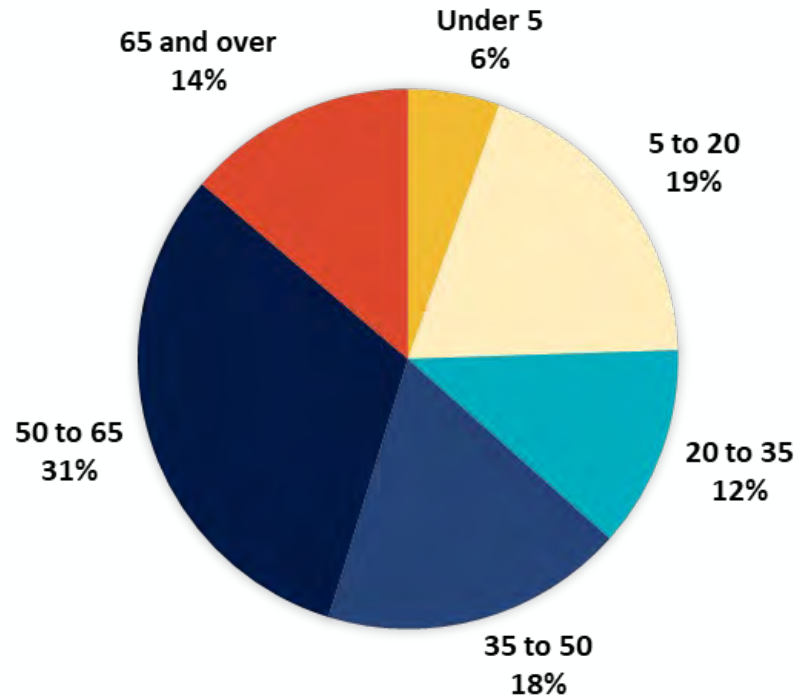
- Shifting ecosystems – more invasive species
- Open space and conserved lands make North Yarmouth more resilient



North Yarmouth Social Vulnerabilities

Not everyone will experience the impacts of climate change equally

AGE OF RESIDENTS



20.1%
Residents 65 years and older who live alone

49.9%
Housing built before 1980



30.3%
homeowners who are cost burdened

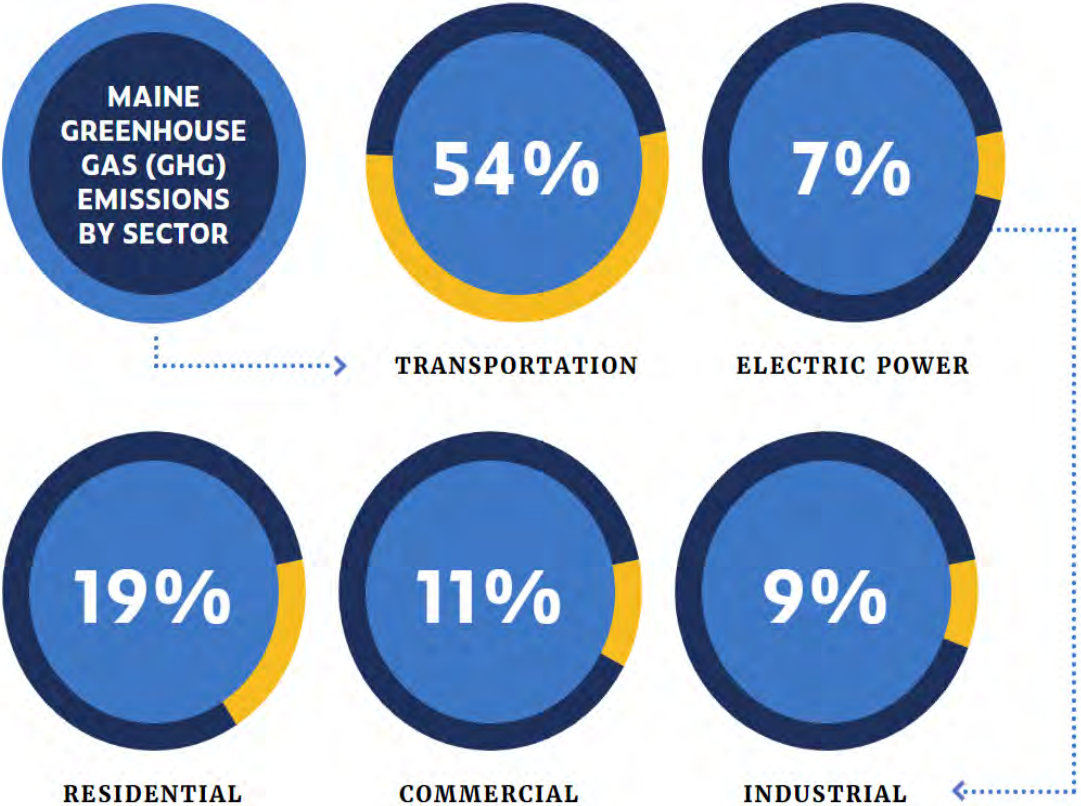


16.0%
Renters who are cost burdened

Cost burdened households are those who spend 30% or more of their income on home or rental costs

State and North Yarmouth Emissions

State Greenhouse Gas Inventory



North Yarmouth Emissions Data

- 0.9% of total emission in Cumberland County (1.3% of population)
- Estimated 8.2 Metric Tons of CO₂e per household (7th lowest out of 28 municipalities in the county)

3

Service Provider Activities

ENROLLMENT PROCESS



1. Municipal Resolution
2. Self-Evaluation and List of Community Actions
3. Community Workshop (with priority action areas)

Municipal Resolution

Climate Action Resolution Passed

- Identifies high level priority action areas for climate change
- Commits to reducing emissions
- Names existing staff and committee to support planning, implementation

RESOLUTION ENDORSING THE DECLARATION OF A CLIMATE EMERGENCY AND CREATION OF A CLIMATE ACTION PLAN TO RESTORE A SAFE CLIMATE

WHEREAS, global climate change poses catastrophic perils to the natural, social, ecological, economic, and cultural environment, and presents profound implications for an array of issues, and requires high-priority responses and action plans from all sectors of society and all levels of government; and

WHEREAS, restoring a safe and stable climate requires an extraordinary, municipal-scale, emergency mobilization response in order to rapidly achieve net-zero greenhouse gas emissions across all sectors of the economy, and to safely drawdown and remove excess carbon from the atmosphere; and

WHEREAS, the Town of Yarmouth, Maine can be a leader in the State of Maine by initiating climate mobilization actions to convert to an ecologically regenerative local economy at emergency speed, as well as advocating for regional and national efforts necessary to reverse global warming and the ecological crisis;

NOW THEREFORE, BE IT RESOLVED, the Town of Yarmouth, Maine joins other Maine communities including Portland, South Portland, Bar Harbor, Saco, and Brunswick, to declare that a climate and ecological emergency threatens our town, state, nation, civilization, humanity, and the natural world; and

BE IT FURTHER RESOLVED, that the Town of Yarmouth, commits to take prompt actions, while recognizing that significant commitment, including regulatory, fiscal and time, is needed to slow and eventually halt the local contribution to global climate change and the associated negative ecological, economic, social, and public health crises. The Town's commitments are to:

- Participate in the State of Maine's Community Resilience Partnership, including completing the Resilience Self-Assessment and Community Action Inventory; and
- Bring municipal greenhouse gas emissions to net-zero as quickly as possible and no later than December 31, 2030, with the intention to focus on carbon reduction, elimination and carbon positivity; and
- Provide education, resources, programs, and a policy framework that promotes significant residential, commercial, transportation, and industrial greenhouse gas emission reductions by 80% by 2030 such that total community emissions are on a path to reach net-zero by 2050 or sooner; and
- Engage the community throughout the process to solicit input from a broad cross-section of the population, creating accountability to maintain a focus on affordability and accessibility to all residents of Yarmouth while accelerating local adaptation and resilience strategies in preparation for intensifying climate impacts.

BE IT FURTHER RESOLVED, the Town of Yarmouth designates the Committee for Energy Efficiency and Sustainability ("CEES") to establish a task force (the "Climate Emergency Task Force"), which shall be initially composed of members of CEES and such other members of the

Self-Evaluation and List of Community Actions

Community Resilience Partnership

Program Contact: Brian Ambrette
brian.ambrette@maine.gov
[Community Resilience Partnership | Office of Policy Innovation & Future \(maine.gov\)](#)

Community Resilience Self-Evaluation

Instructions: This tool is intended to help organize your community's approach to increasing resilience to natural hazards and climate change impacts. Answer the questions to the best of your knowledge and seek information from your colleagues in municipal and county government and organizations in your community. Provide any relevant information in the explanation field. If it is difficult to give a clear yes or no response to a question, use the explanation field to explain why. **There are no wrong answers and the responses here will not affect your community's eligibility to receive grants.** Where the response to a question is no, that may indicate an area of opportunity to address through a Community Action Grant.

Community name:	North Yarmouth
Self-Evaluation responses provided by: Please include contact info	Diane Barnes, Town Manager
Date:	7/28/2022
Was this evaluation discussed during a community workshop? Include the date of the workshop.	Yes – August 25, 2022

Once the questions on the following pages are complete, use these prompts to identify potential next steps for your community:

What are two things your community is doing well?	<ol style="list-style-type: none"> Updated EMA hazard mitigation plan in 2022. Working on developing a storm debris management plan. Modernizing our Town Buildings. Community outreach via social media and public education. Currently have 2 EV charging stations.
What are two areas that could be improved in the short-term?	<ol style="list-style-type: none"> LED lighting in Town Office & Public Works Building Eliminate invasives throughout our town and town parks. Culvert improvements
What is important for your community to address in the long-term?	<ol style="list-style-type: none"> Modernize town buildings Protect Environment & Promote Natural Climate Solutions. Continue evaluation of stormwater
What specific 3 to 5 actions are priorities for your community?	<ol style="list-style-type: none"> Modernize Maine's Buildings- LED lighting in Town owned buildings. Protect the Environment- Eliminate invasives and promote tree plantings. Create sidewalks

Sets baseline conditions and provides information on projects completed to date

Community Resilience Partnership List of Community Actions Revised December 1, 2021		
✓ Strategy Areas & Actions	Additional Resources (\$=funding source)	
Strategy Area A: Embrace the Future of Transportation		
Accelerate the Transition to Electric Vehicles (EVs)		
A1	Purchase or lease electric vehicles for municipal or tribal government-owned vehicle fleets. (Grants capped at \$2,000 per light duty EV.)	Efficiency Maine: Municipal EV rebates (\$)
A2	Install EV chargers in public parking areas.	Efficiency Maine: EV supply equipment initiative (\$)
A3	Adopt ordinances to encourage EV charging infrastructure, including at multifamily dwellings, businesses, and public parking areas.	Municipal Electric Vehicle Readiness Toolkit (Southern Maine Planning and Development Commission)
A4	Adopt an anti-idling ordinance.	Example: Bar Harbor Municipal Code
Improve Mobility and Reduce Vehicle Miles Traveled (VMT)		
A5	Implement strategies that increase public transit ridership and alternative transportation modes, including bike and walking infrastructure.	
A6	Implement strategies that encourage municipal/tribal employees to commute via carpools, public transit, bike/walk, or other alternatives to single-occupancy vehicles.	
A7	Adopt a telework policy for municipal/tribal government staff positions that can work remotely some days per week.	
A8	Adopt land use and development policies in plans and codes that reduce the need for driving (e.g. locating schools, workplaces, and shopping near where people live; encouraging density of development near housing and transportation).	
A9	Adopt a Complete Streets policy which addresses safety, bike/pedestrian uses, and transit.	Maine DOT Complete Streets
A10	Adopt a broadband plan that reduces the need to drive by increasing access to high speed internet for underserved residents to support telecommuting, access to remote education and telehealth.	Connect Maine planning and infrastructure grants (\$)
Strategy Area B: Modernize Maine's Buildings		
Transition to Cleaner Heating and Cooling, and Efficient Appliances in Municipal/Tribal Buildings		
B1	Adopt and execute a plan for energy efficiency and building envelope weatherization improvements for municipal/tribal buildings. Collaborate with	Efficiency Maine: Public Sector (\$)

NORTH YARMOUTH KEY IMPACTS



Self-Evaluation Highlights



Inland flooding is the area of most concern



Degradation of infrastructure due to extreme storms and increased heat



Need continue evaluation of stormwater management and ways to promote natural climate solutions

Projects Completed To-Date

- Modernizing town buildings (including solar)
- Electric vehicle charging stations
- Storm debris management plan



Priority Action Areas for Consideration

- Modernize Maine's Buildings- LED lighting in Town-owned buildings.
- Protect the Environment- Eliminate invasives and promote tree plantings.
- Create sidewalks

4

Questions/Discussion

NEXT STEPS

- Municipal staff and committees work to scope out project
- Application for funding due Sept. 20th

