

Plan Legend

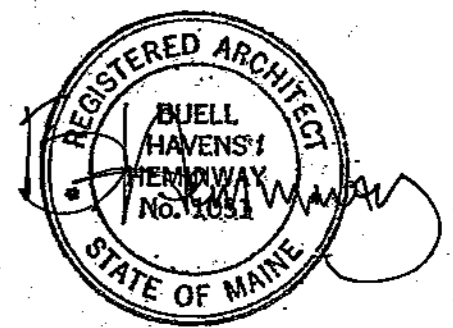
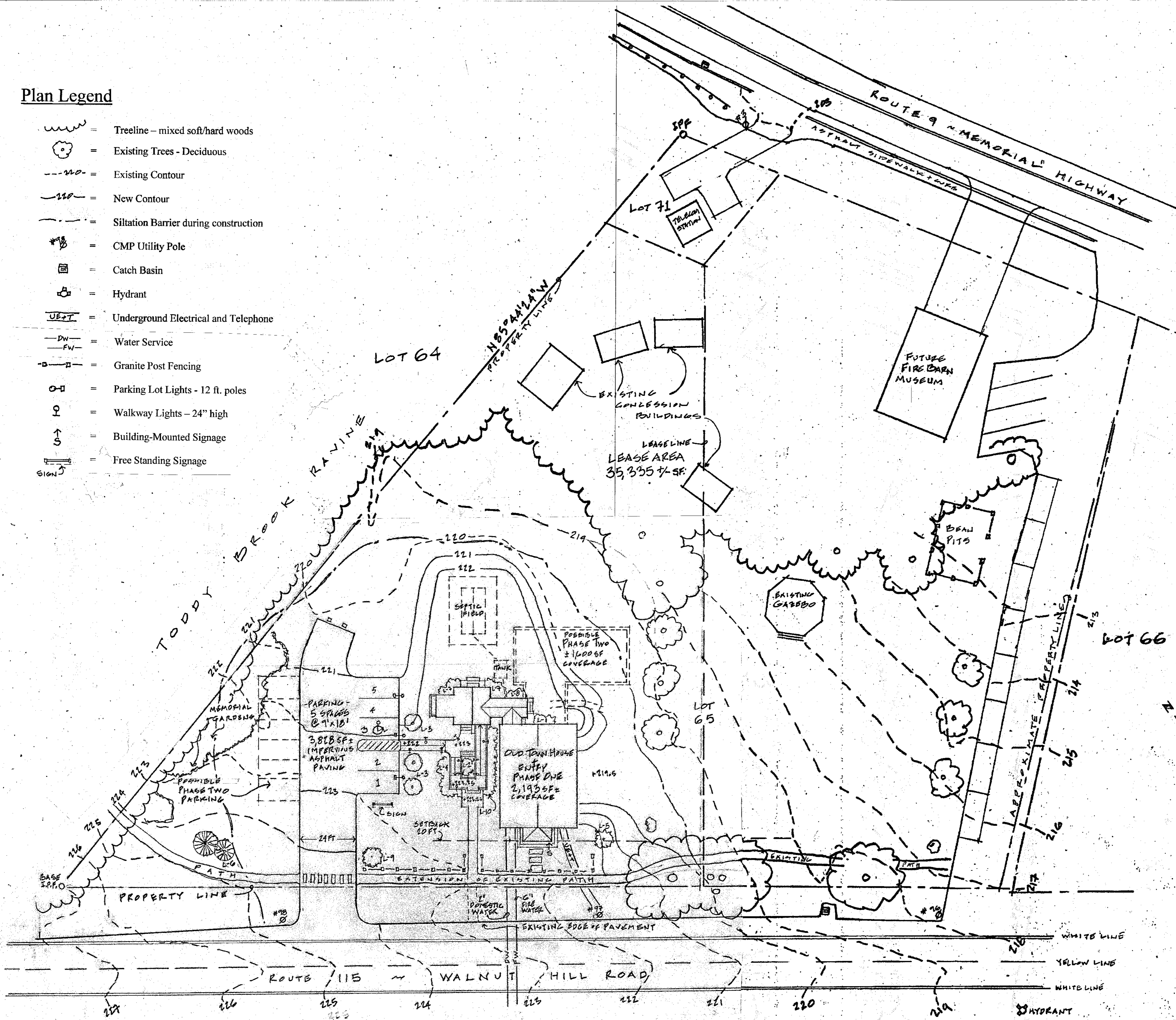
- = Treeline - mixed soft/hard woods
- = Existing Trees - Deciduous
- = Existing Contour
- = New Contour
- = Siltation Barrier during construction
- = CMP Utility Pole
- = Catch Basin
- = Hydrant
- = Underground Electrical and Telephone
- = Water Service
- = Granite Post Fencing
- = Parking Lot Lights - 12 ft. poles
- = Walkway Lights - 24" high
- = Building-Mounted Signage
- = Free Standing Signage

General Notes

1. Property Owner of Record is Town of North Yarmouth
Tax Map 7, Lot 65
C.C.R.D. Book 13106, Page 276
2. Site Plan derived from:
"Topographic Survey at Route 115, North Yarmouth ME"
by Owen Haskell, Inc. dated Sept.6, 2019; revised 12/2/2019
made for North Yarmouth Historical Society

Landscape Plantings Key

- L-1 = 1- Azalea; Mandarin Lights
- L-2 = 2- Annabelle Hydrangea
- L-3 = 3- Crabapple, malus profusion
- L-4 = 30- Daylilies, Hemerocallis; happy returns
- L-5 = 1- Forsythia Gold
- L-6 = 2- White Spruce, picea glauca
- L-7 = 3- Euonymous Gaiety
- L-8 = 3- Wiegela Wine + Roses
- L-9 = 1- Prunus Accolade
- L-10 = 400 Pachysandra



Old Town House
Relocation and Addition
for
The North Yarmouth
Historical Society
Designed by
Buell Hemingway
ARCHITECTS
PO Box 17733 DTS - Portland, Me 04112
(207) 772-8892 - bheminway@gwi.net

Date: January 22, 2021
Scale: 1" = 20 feet
By: Buell
Revisions:

Drawing Title:
Site Plan
Phase One
Leased Portion of Village
Green ~ Map 7 Lot 65
Drawing Number:
SPR- 1a
Project Number: 1904

