

Social Vulnerabilities

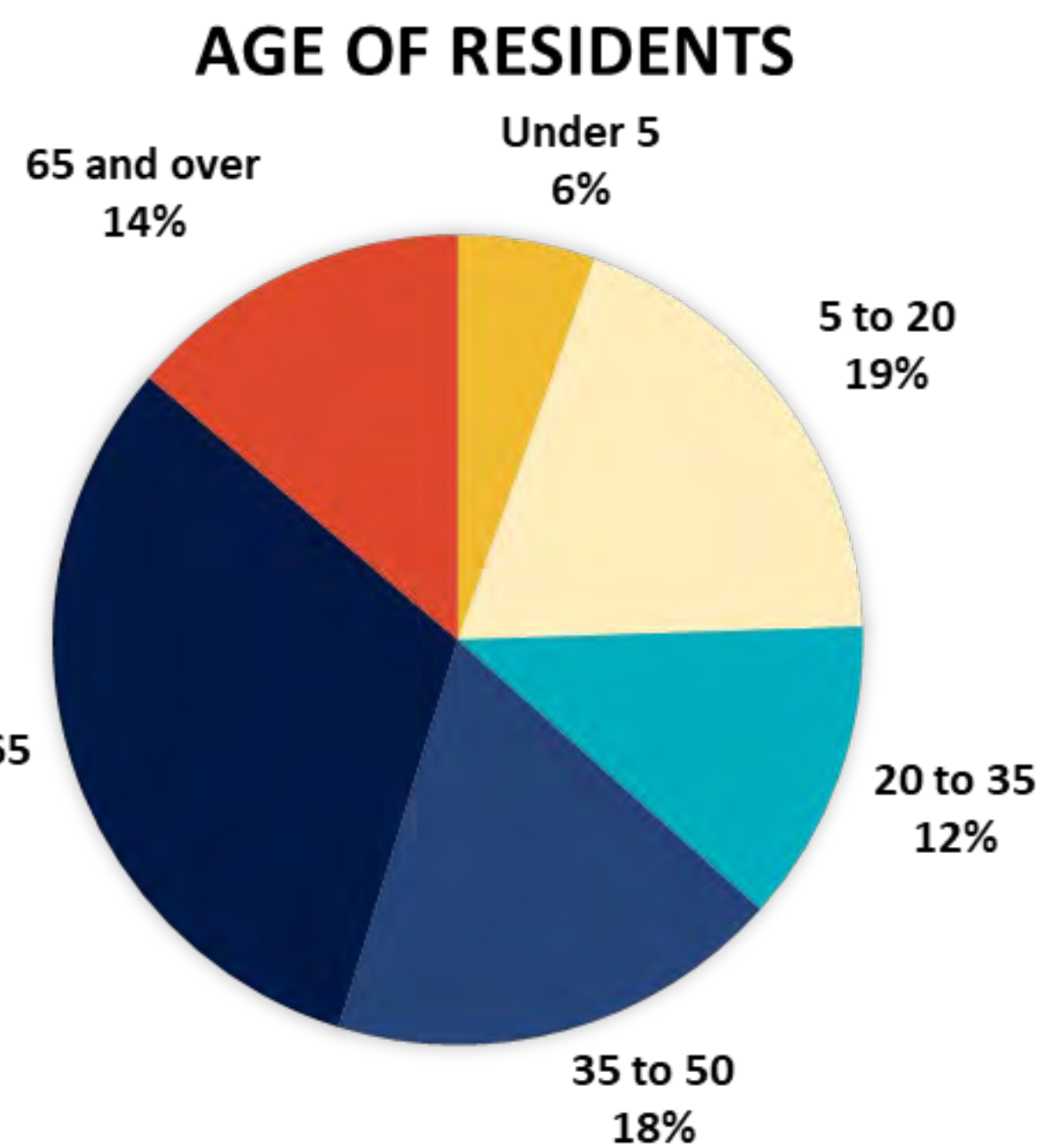
Certain people and groups are more vulnerable to the impacts of climate change than others. People in the same town may experience climate change differently. Examples of vulnerabilities that increase risk:

- **Age and health** affect the ability to control body temperature and maintain a healthy immune system, which make older and younger populations more prone to health-related climate impacts.
- **Race and ethnicity** are strongly correlated with disparities in health, exposure to environmental pollution, and vulnerability to natural hazards.
- People **living below the poverty line** or somewhere **unaffordable** have less money and time to prepare for climate change or deal with climate disasters.

Reducing social vulnerabilities creates healthier, more resilient communities

3,839
Total Population

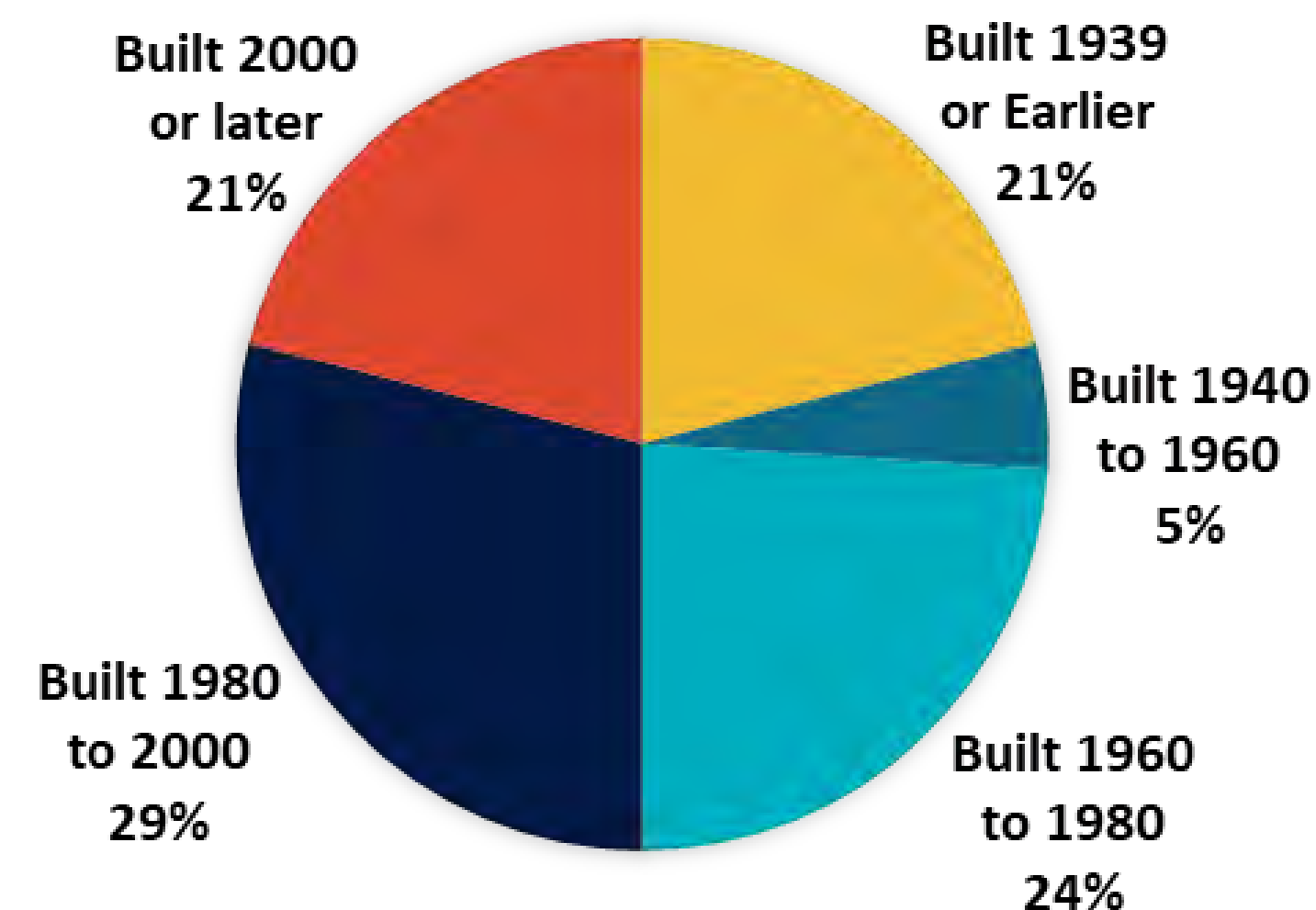
1,522 total
Housing Units



20.1%
Residents 65 years and older who live alone

49.9%
Housing built before 1980

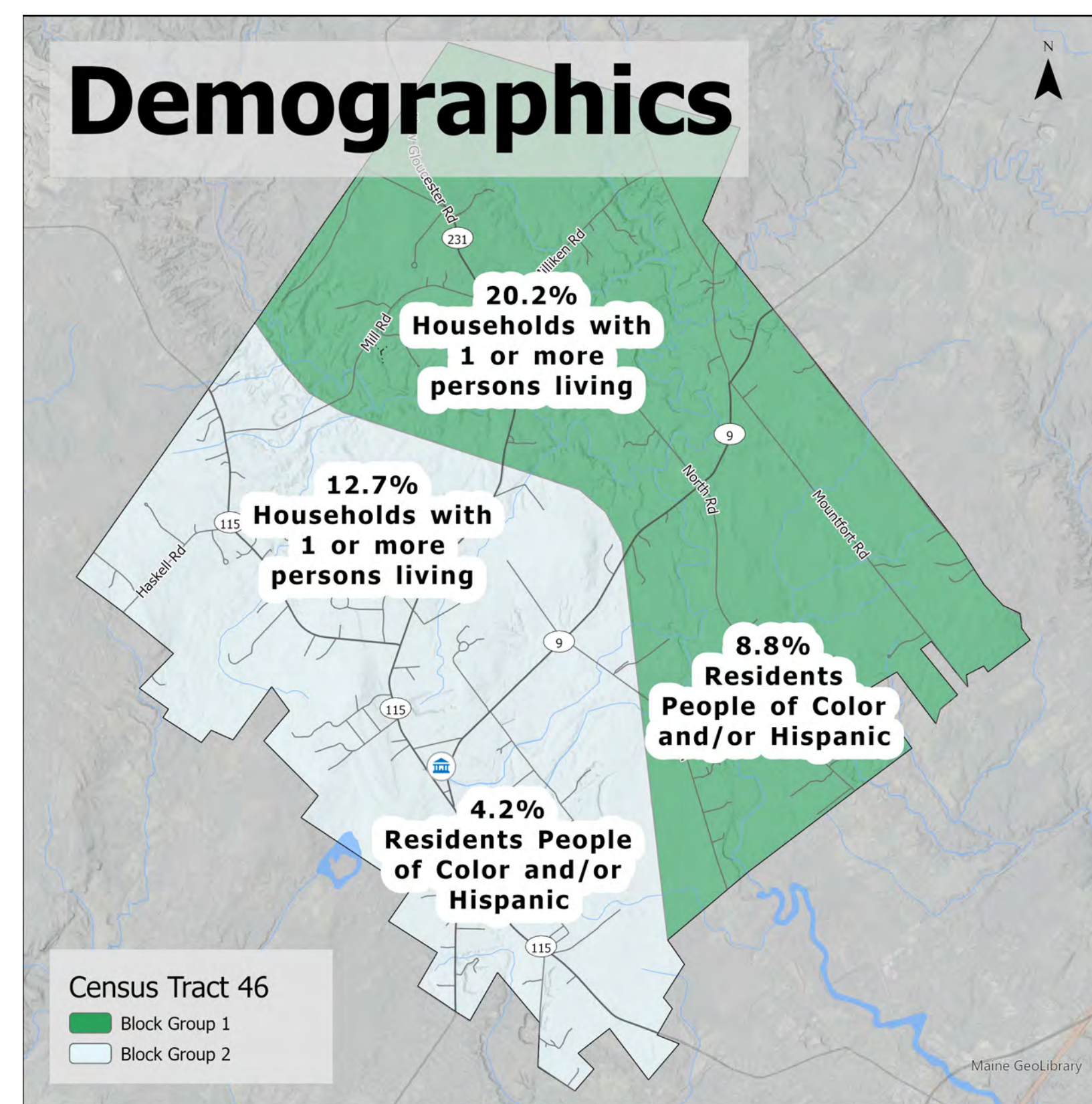
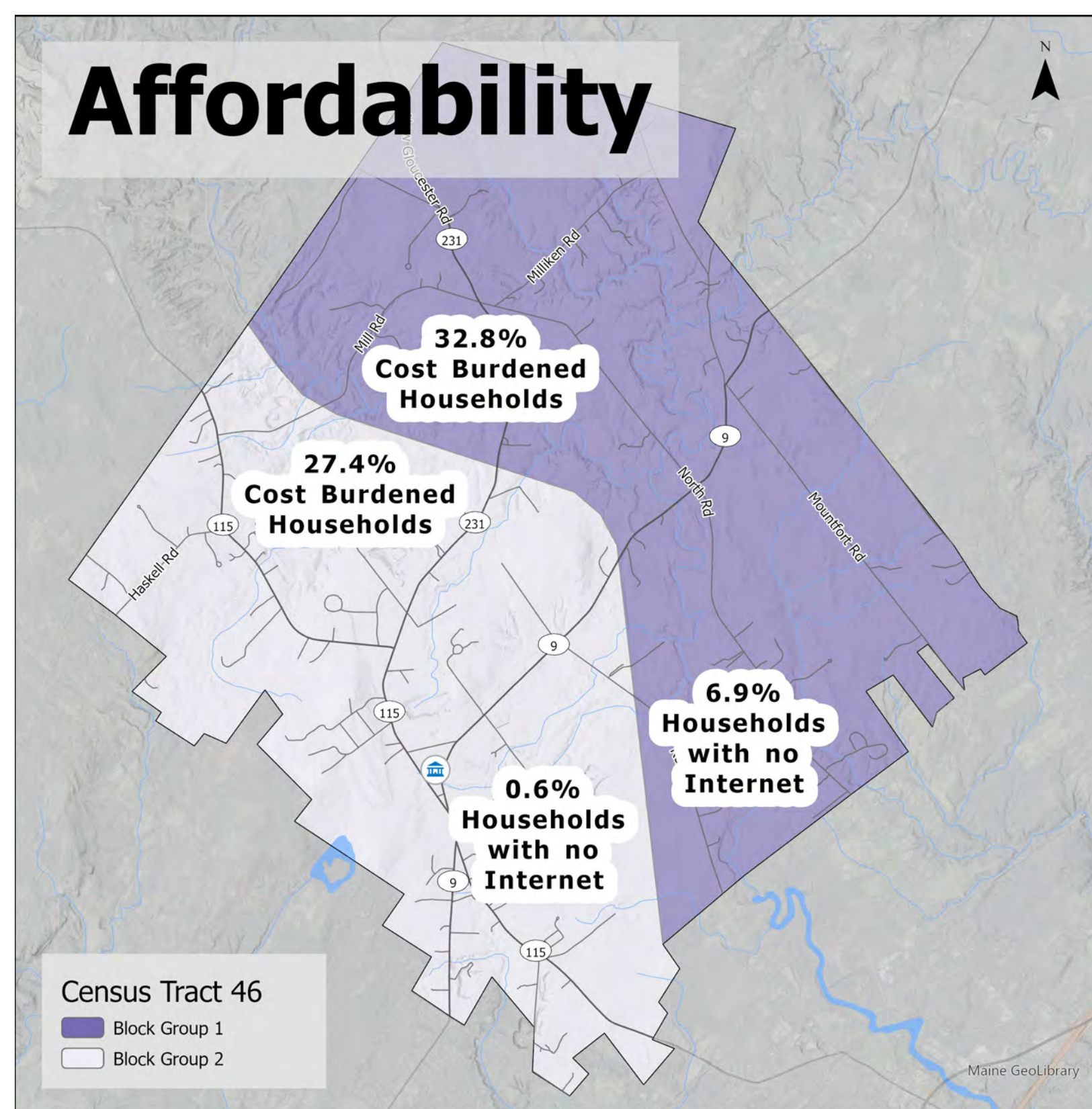
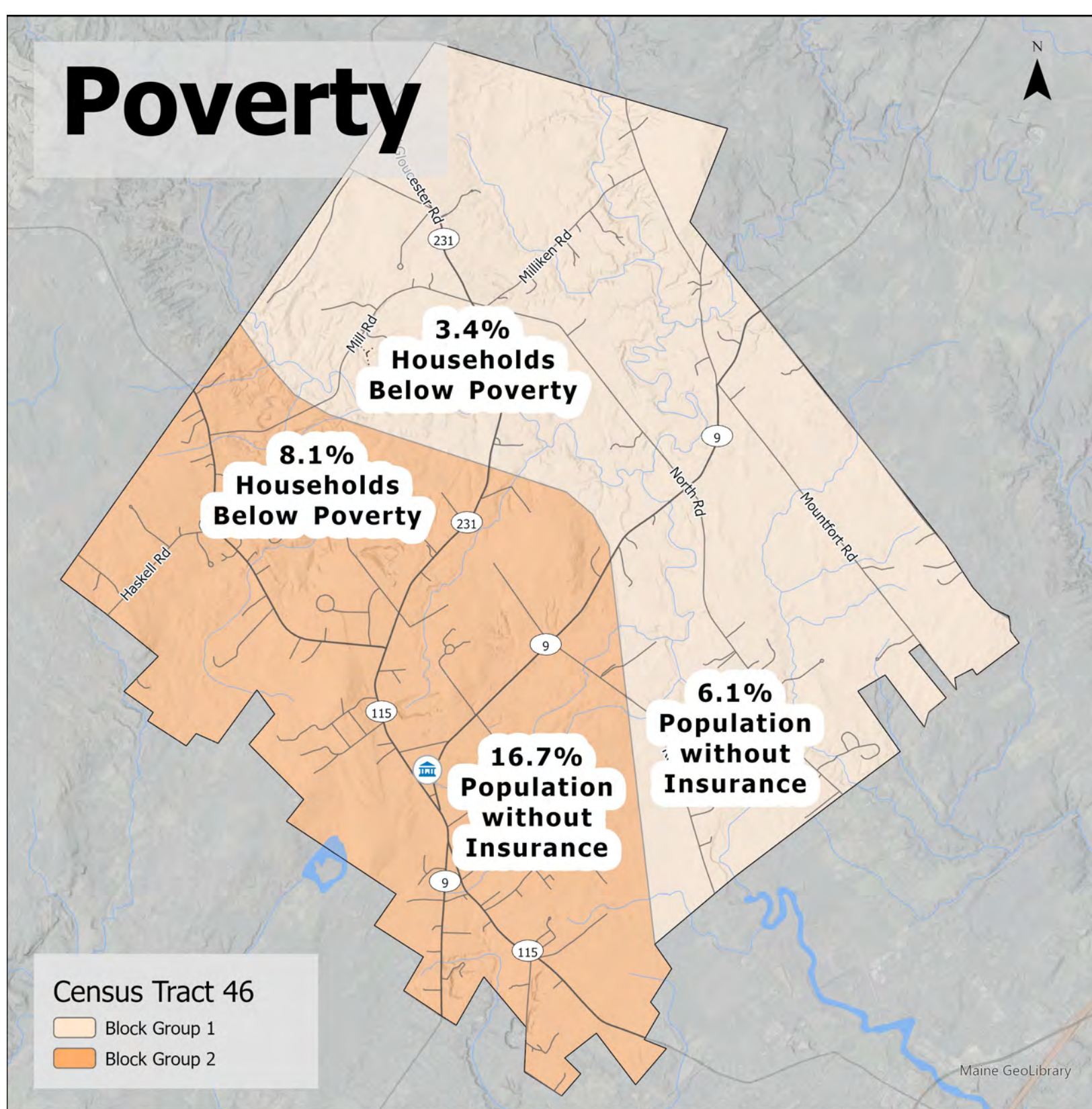
AGE OF HOUSING UNITS



30.3%
homeowners who are cost burdened



16.0%
Renters who are cost burdened



Household Composition and Disability

Aged 65+	13.8%
Aged 65+ and Living Alone	20.1%
Aged 18 or younger	22.3%
Living with a Disability	7.4%

Socioeconomic

Below Poverty	5.9%
Unemployed	1.8%
Self-employed	8.4%
Natural Resource Occupation	0.3%
Median Income	\$93,967

Housing and Transportation

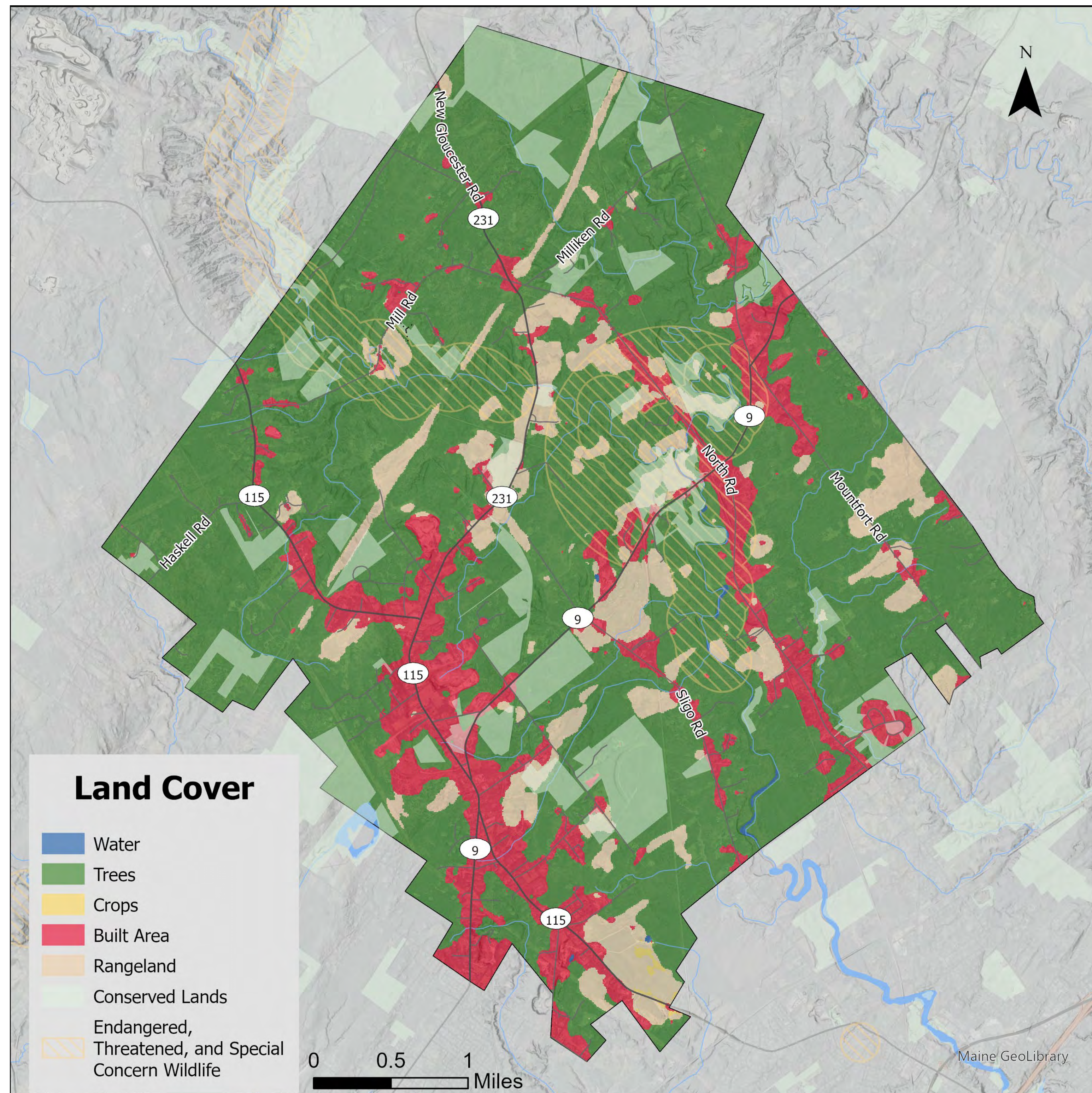
Mobile Homes	0%
Older Housing	49.9%
No Vehicle	2.7%
No Internet	5.9%
Renters	18.5%
Cost Burdened	27.6%

Minority Status

Minority	6.3%
Limited English-Speaking Households	0%

Ecosystem Vulnerabilities

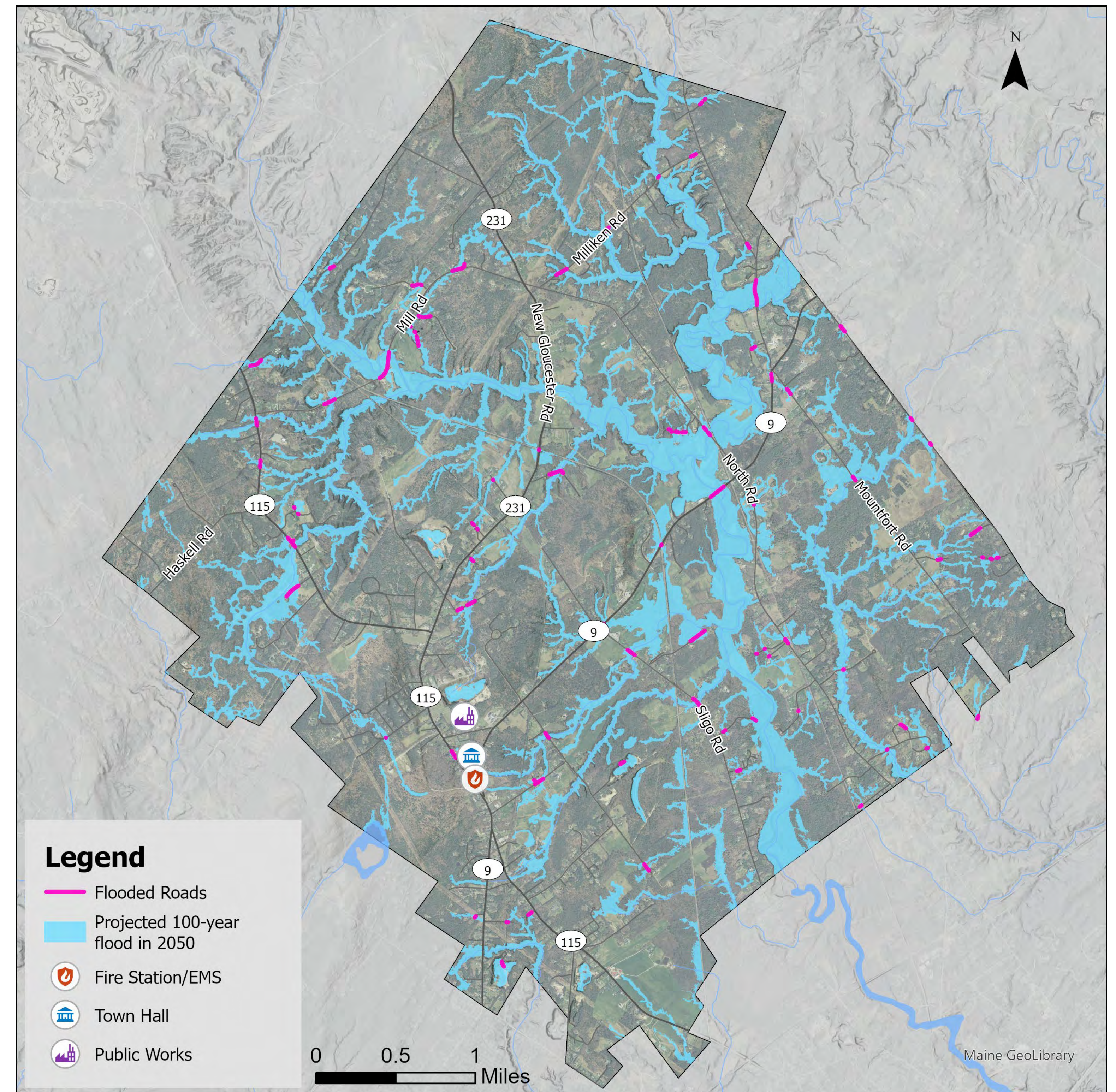
Ecosystems support wildlife, filter air and water, and play a vital role in maintaining a healthy community and vibrant economy. Climate change, poses a risk to these delicate habitats. Understanding environmental vulnerabilities will help direct resources to protect these key systems.



Data sources: State of Maine, Dept. Inland Fisheries and Wildlife; ESRI

Infrastructure Vulnerabilities

Several roads and bridges are vulnerable to flooding due to increased precipitation from climate change. In addition, the changing temperatures will decrease the lifespan of pavement. This may impact emergency responses, travel to critical resources or isolate communities.



Data sources: State of Maine; FloodFactor