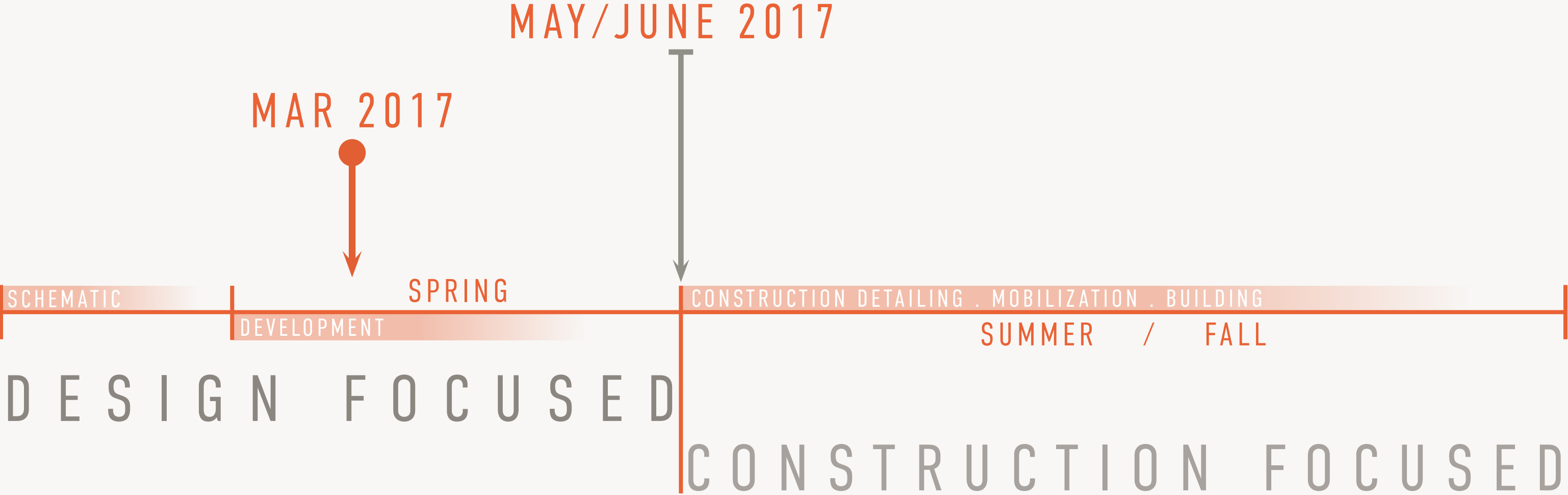


# WESCUSTOGO HALL

.....  
COMMUNITY FORUM II - 09 MARCH 2017

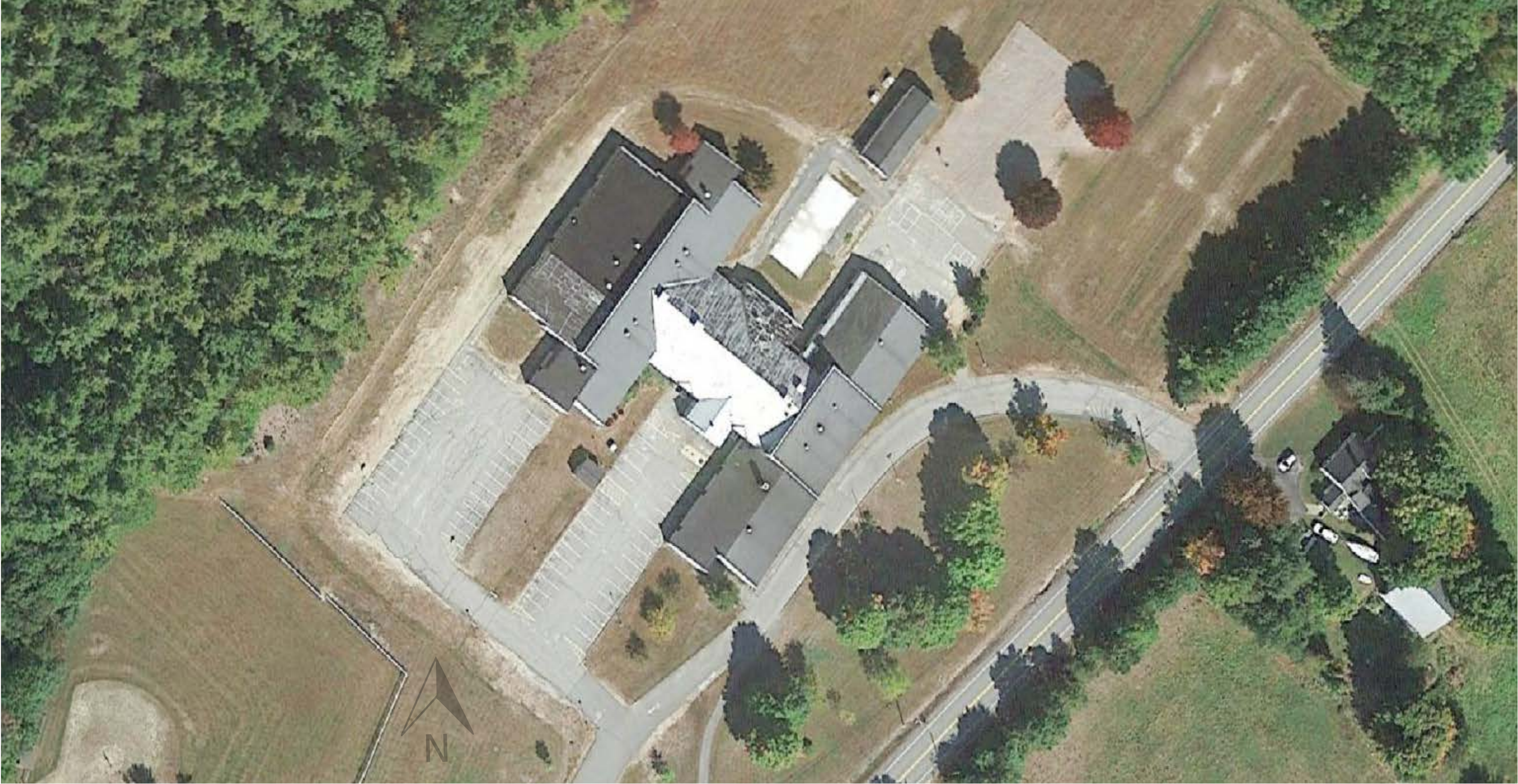


# PROJECT TIMELINE



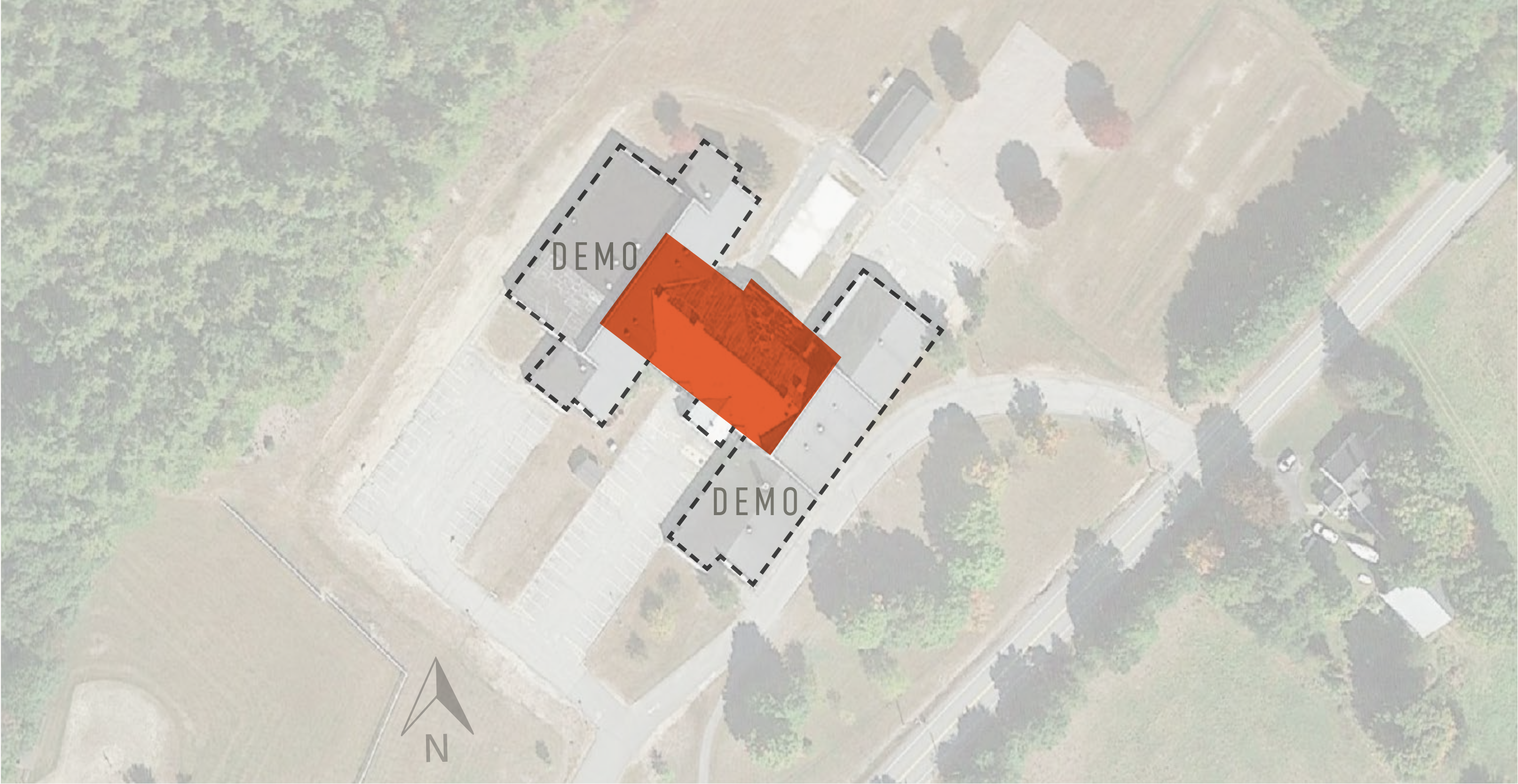


# SITE AERIAL - EXISTING



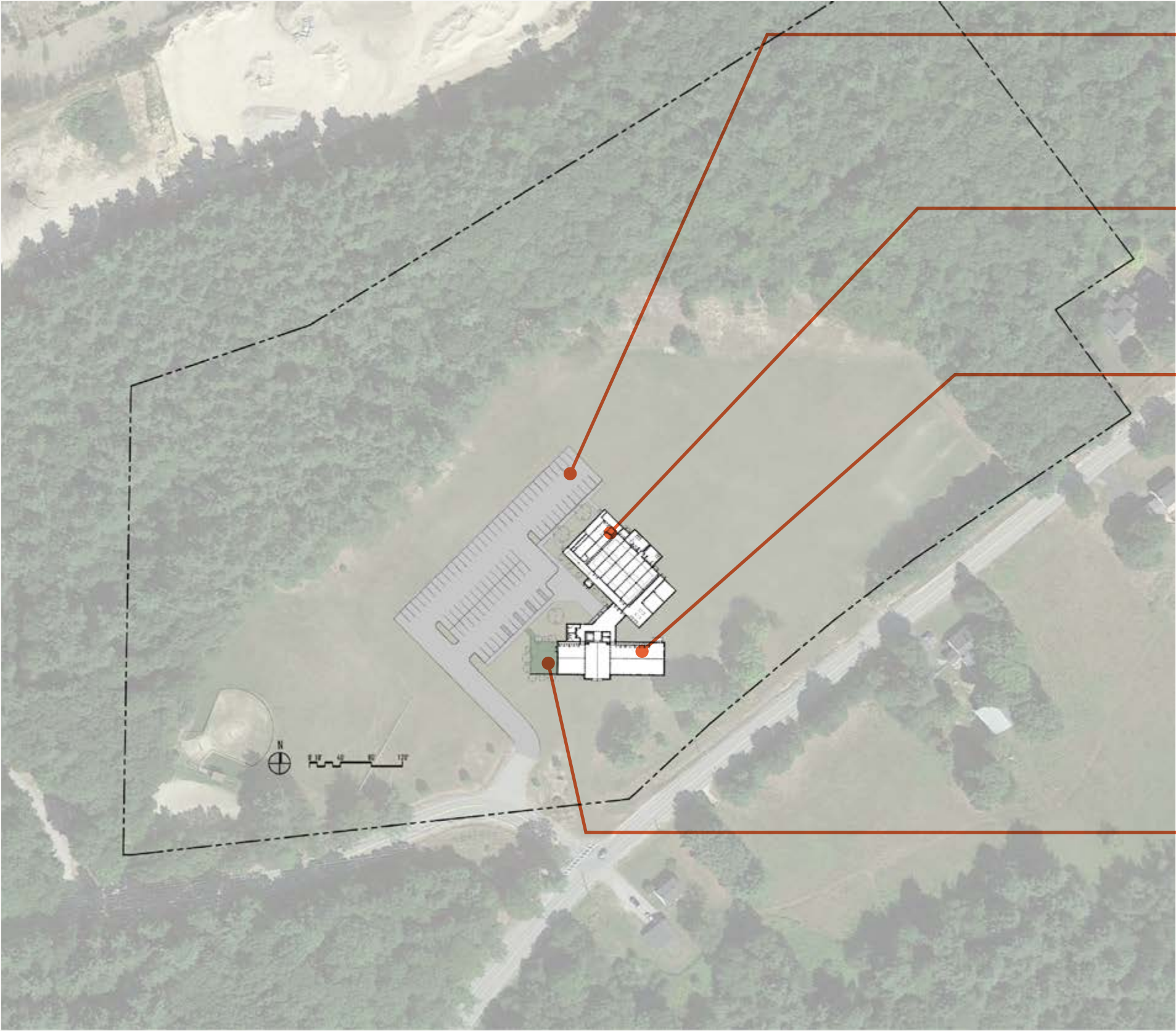


# DEMO PLAN





# SCHEMATIC SITE PLAN



PARKING/PAVED SURFACE  
32,750 SF

EXISTING NYMS GYM/SPACES  
9,800 SF

WESCUSTOGO HALL  
+ LOBBY  
7,800 SF

OUTDOOR AREA  
+/-1,200 SF



# SITE AERIAL - PROPOSED

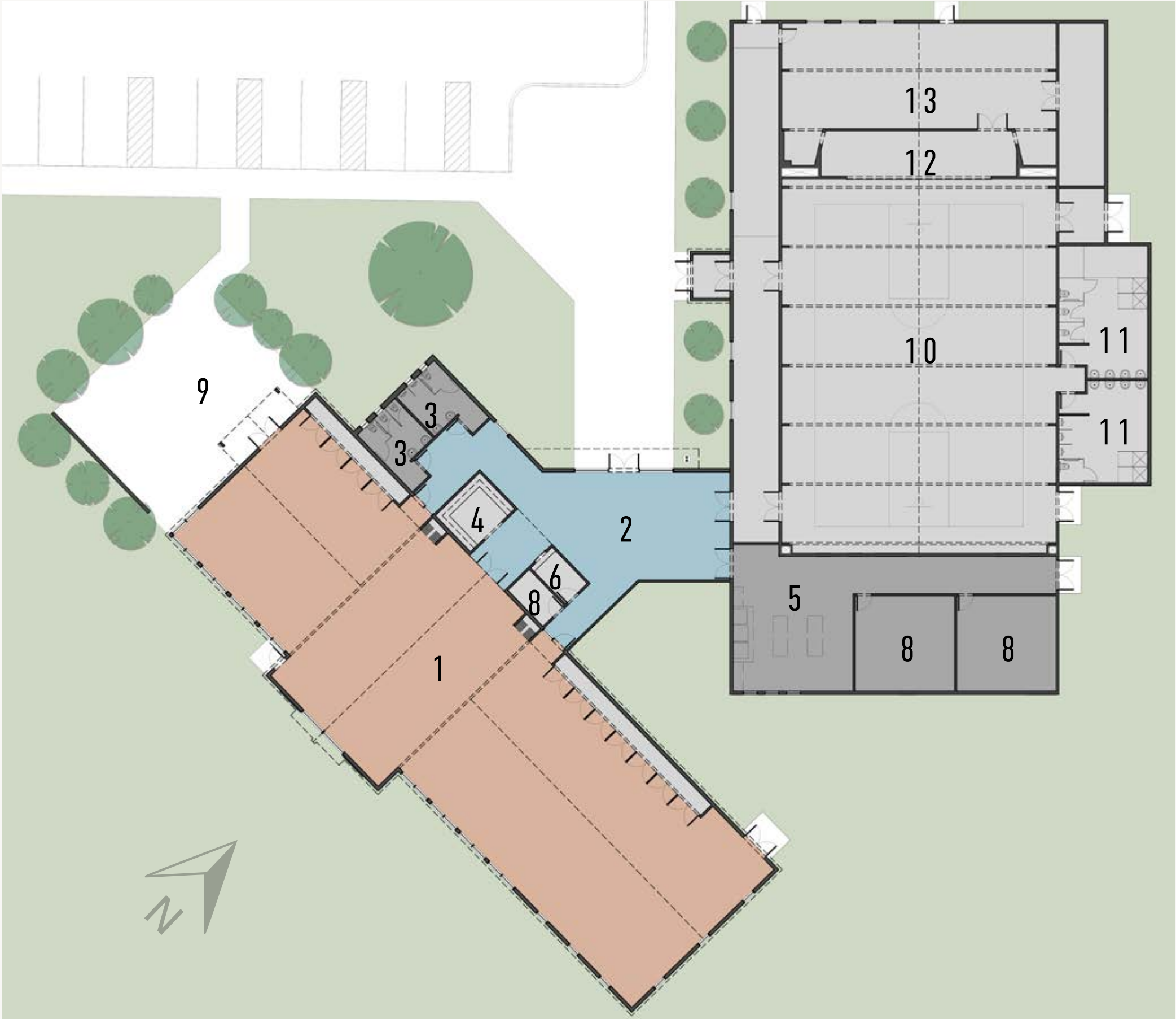




# SCHEMATIC FLOOR PLAN

## LEGEND

- 1. ASSEMBLY HALL
- 2. LOBBY
- 3. RESTROOMS
- 4. COAT ROOM
- 5. KITCHEN
- 6. TICKETS
- 7. STORAGE
- 8. STORAGE/MECH
- 9. OUTDOOR AREA
- 10. GYM
- 11. BR/SHOWERS
- 12. STAGE
- 13. SENIOR CENTER/  
LOUNGE





# EXTERIOR VIEW 1





# EXTERIOR VIEW 1



BARRETT MADE

HOMES • SPACES • DETAILS

09 . MARCH . 2017  
COMMUNITY FORUM II





# EXTERIOR VIEW 2





# EXTERIOR VIEW 2





# EXTERIOR VIEW 3





# EXTERIOR VIEW 3





# EXTERIOR VIEW 4





# EXTERIOR VIEW 4





# EXTERIOR VIEW 5





# EXTERIOR VIEW 5





# EXTERIOR NIGHT VIEW





# EXTERIOR NIGHT VIEW





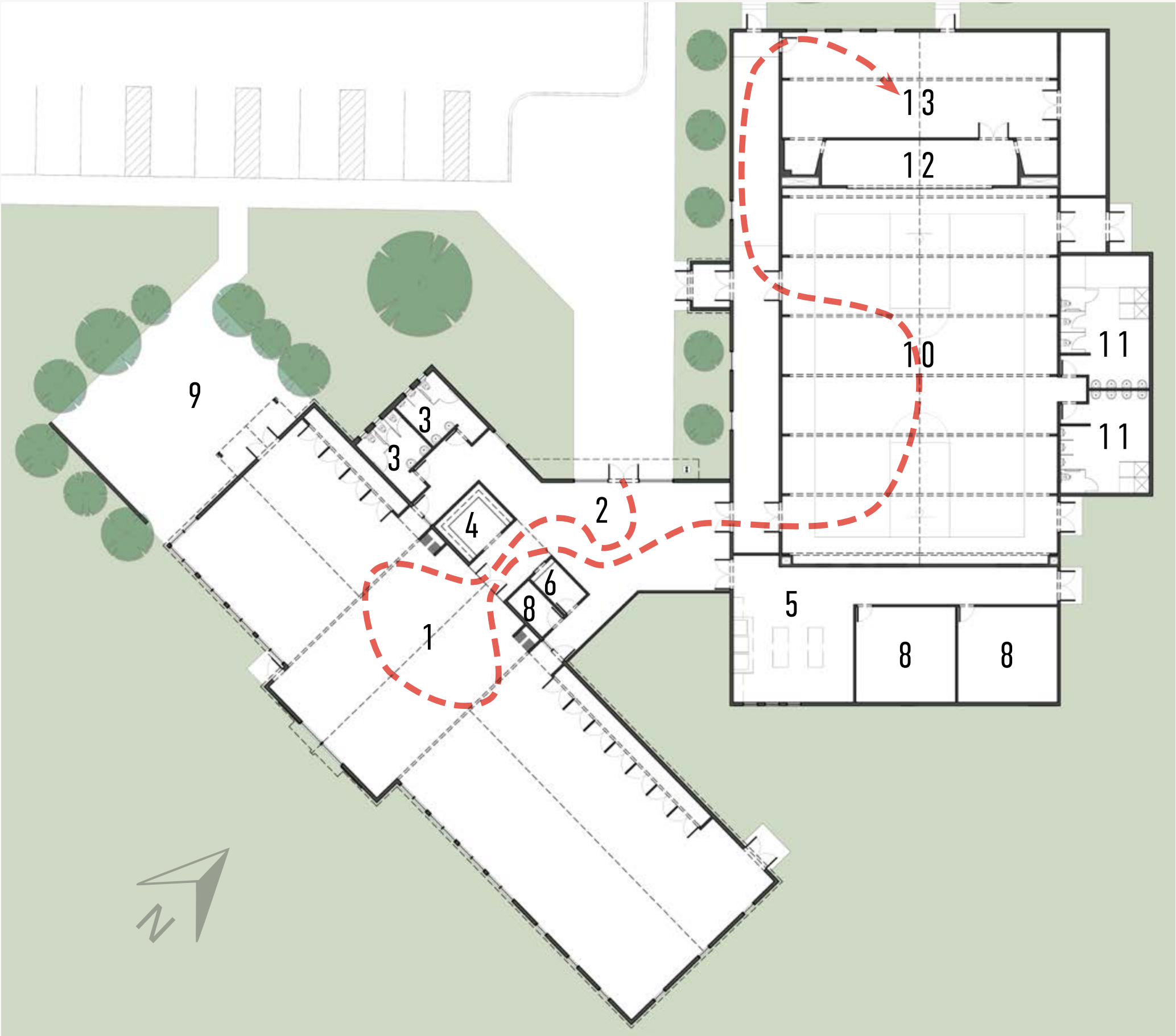




# SCHEMATIC FLOOR PLAN

## LEGEND

- 1. ASSEMBLY HALL
- 2. LOBBY
- 3. RESTROOMS
- 4. COAT ROOM
- 5. KITCHEN
- 6. TICKETS
- 7. STORAGE
- 8. STORAGE/MECH
- 9. OUTDOOR AREA
- 10. GYM
- 11. BR/SHOWERS
- 12. STAGE
- 13. SENIOR CENTER/ LOUNGE





# WESCUSTOGO HALL

.....  
COMMUNITY FORUM II - 09 MARCH 2017

